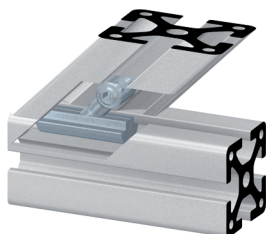


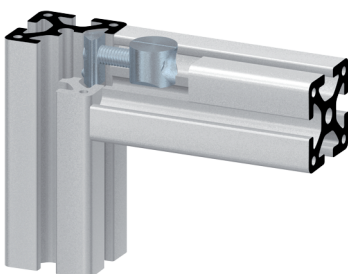
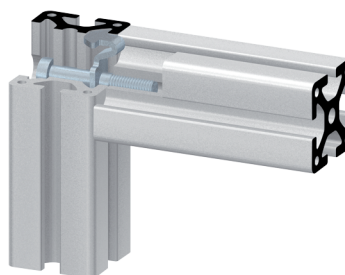
Central Fasteners

- for high static loads
- universal applications when using the range of anchors
- positive locking



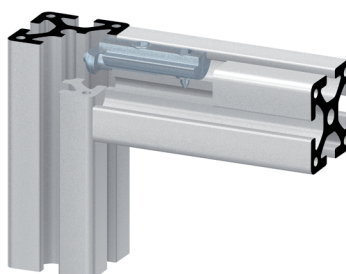
Standard Fasteners

- universal applications with anti-twist feature
- inexpensive and simple connection
- simple assembly
- for high static and dynamic loads
- positive locking
- the shape of the fastener protects the t-slot



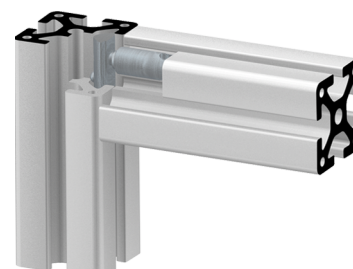
Universal Fasteners

- for high static and dynamic loads
- universal applications when using the range of t-nuts
- positive locking



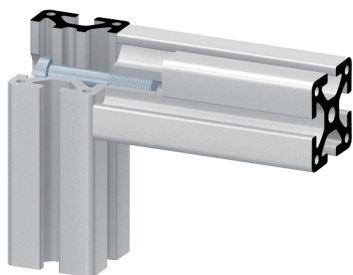
Quick Fasteners

- anti-twist feature
- positive locking
- no machining required
- simple assembly



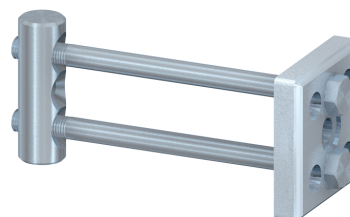
Automatic Connector

- Slide-in t-nut provided
- No machining necessary



Screw Fasteners M 8

- for high static and dynamic loads
- positive locking
- simple assembly
- when using only one screw a locator block prevents the profile from twisting



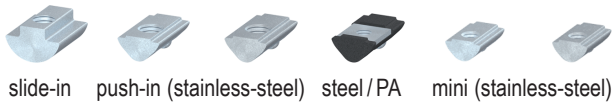
Heavy Duty Fasteners

- stable and positive attachment
- for high static and dynamic loads

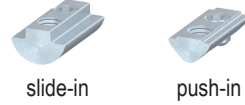
S	Silverline fastener
V	anti-twist feature
VA	stainless-steel
ON	barrel housing without tappets
EL	parallel connection, twist-in
EQ	cross connection, twist-in
L	long

NQ	t-slot fixation, cross connection
NL	t-slot fixation, parallel connection
G	thread (butt connection)
GC	G-type bolt / t-nut connection
GCV	G-type bolt / t-nut connection, anti-twist security

SPS	parallel connection
SVPS	parallel connection, anti-twist feature
EVLS	parallel connection, twist-in
EVQS	cross connection, twist-in

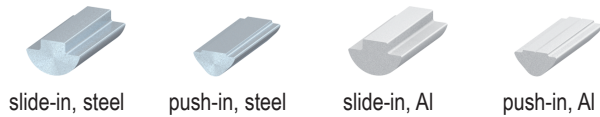


T-Nuts, ball-type



T-Nuts, with grub screw

- Positioning in the t-slot via spring-loaded ball or grub screw
- slide-in and push-in t-nut design
- threaded holes from M 3 up to M 8



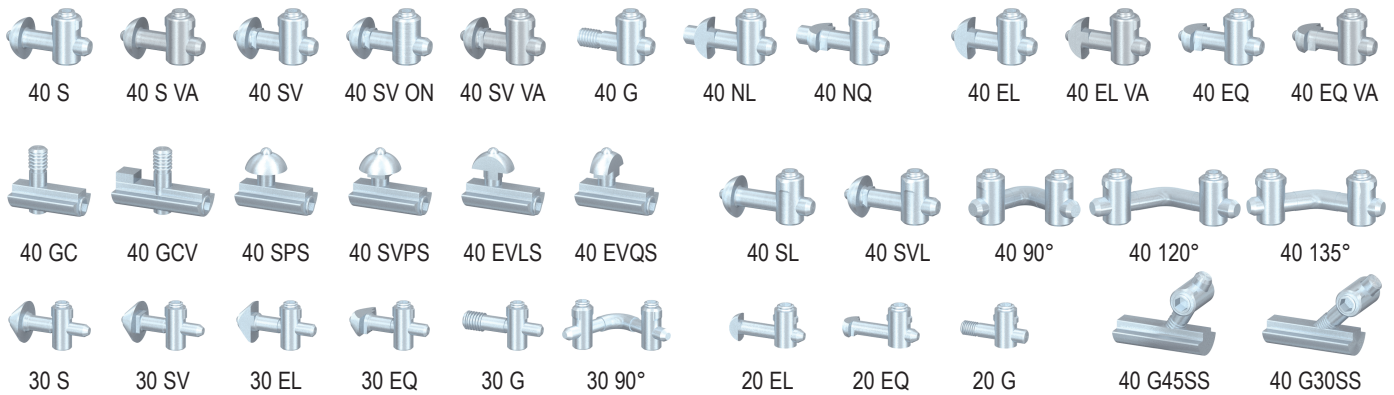
T-Nut Profiles



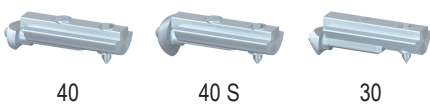
Double T-Nuts



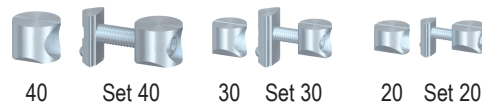
Square T-Nuts



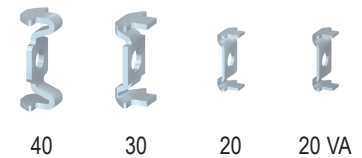
Central Fasteners



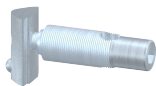
Quick Fasteners



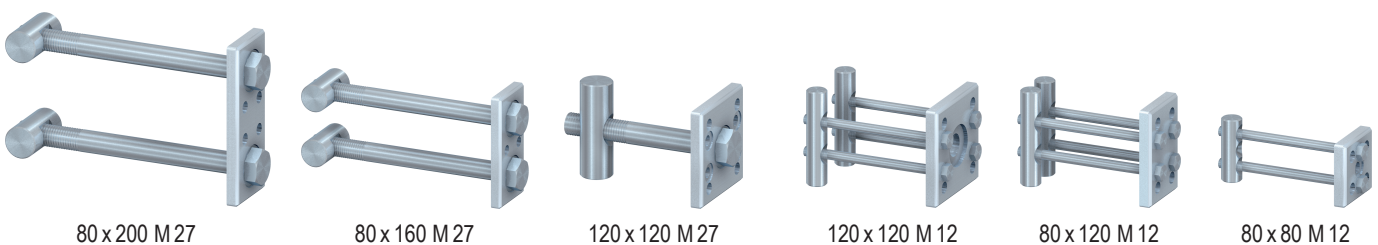
Universal Fasteners



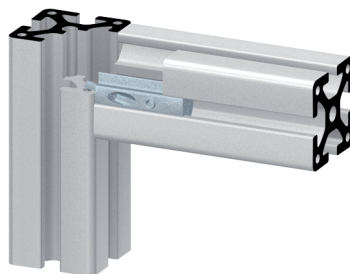
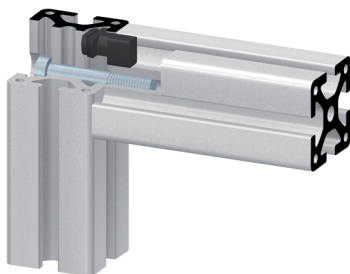
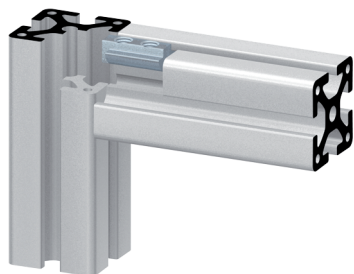
Standard Connectors



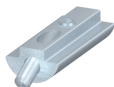
Automatic Connector



Heavy Duty Fasteners



Special T-Nut



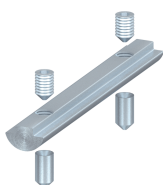
Anti-Twist T-Nut



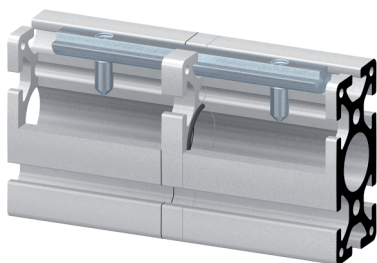
Anti-Twist Set Screw



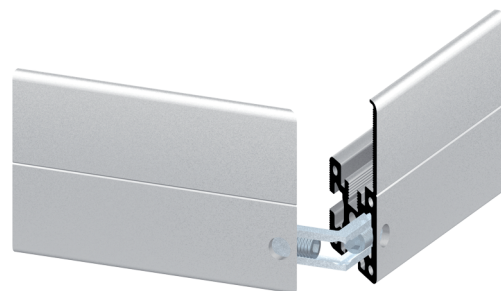
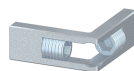
Attachment Screws M6, M8



Pneumatic Connector 40



Miter Connector 40 90°



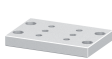
Special T-Nuts, Accessories



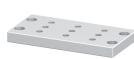
40 x 80



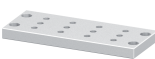
80 x 80



80 x 120



80 x 160



80 x 200



80 x 280 30°



80 x 200 45°



80 x 160 60°

Attachment Plates



300



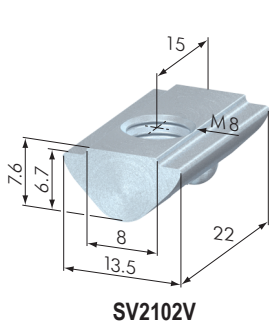
250



200

Step Fasteners

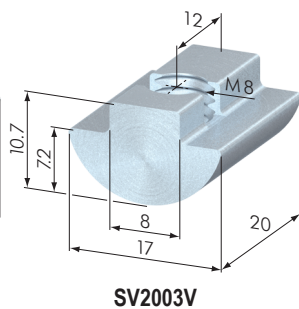
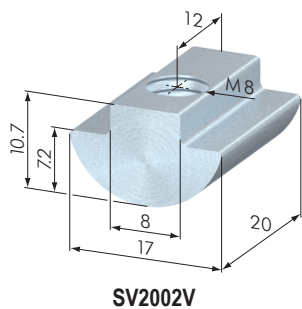


**T-Nuts, ball-type, push-in**

Thread	M 3	M 4	M 5	M 6	M 8	1/4"	5/16"	#10-32UNC
Part N°	SV2110V	SV2112V	SV2100V	SV2101V	SV2102V	SV2860V	SV2850V	–
Part N° VA	–	SV2114V	SV2104V	SV2105V	SV2106V	SV2880V	SV2870V	SV2890V
Weight	12 g	11 g	11 g	10 g	9 g	10 g	9 g	11 g

Application: T-nut for swiveling into the t-slot. Fits into the t-slot at any point. Held in position by a spring-loaded ball. Raised area fits into the t-slot to stop twisting.

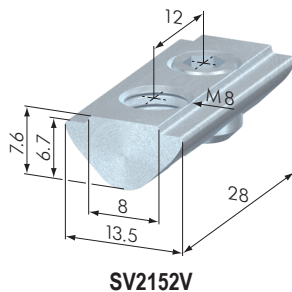
Material: steel, zinc-plated or stainless-steel

**T-Nuts, ball-type, slide-in**

Thread	M 5	M 6	M 8	M 8 S	1/4"	5/16"
Part N°	SV2000V	SV2001V	SV2002V	SV2003V	SV2810V	SV2800V
Weight	17 g	17 g	15 g	14 g	17 g	15 g

Application: Slides in the t-slot from the end of the profile and is held in position by a spring-loaded ball. The wide supporting surface of the t-nut makes it suitable for greater fastening forces.

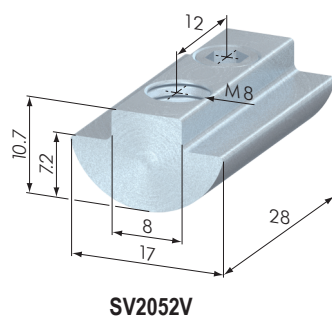
Material: steel, zinc-plated

**T-Nuts, push-in**

Thread	M 5	M 6	M 8
Part N°	SV2150V	SV2151V	SV2152V
Weight	14 g	14 g	12 g

Application: T-nut for swiveling into the t-slot. Fits into the t-slot at any point. Held in position by a grub screw. Raised area fits into the t-slot to stop twisting.

Material: steel, zinc-plated

**T-Nuts, slide-in**

Thread	M 5	M 6	M 8
Part N°	SV2050V	SV2051V	SV2052V
Weight	26 g	24 g	21 g

Application: Slides in the t-slot from the end of the profile and is locked into position by a grub screw. The wide supporting surface of the t-nut makes it suitable for greater fastening forces.

Material: steel, zinc-plated



T-Nuts, slide-in



T-Nuts, push-in



T-Nuts mini

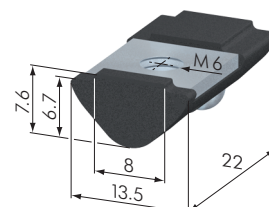
T-Nuts steel / plastic

Thread	M 3	M 4	M 5	M 6
Part No	SV2145S	SV2146S	SV2147S	SV2148S
Weight	4 g	4 g	4 g	4 g



Application: T-nut for swiveling into the t-slot. Fits into the t-slot at any point. Held in position by a spring-loaded ball. Raised area fits into groove to stop twisting.

Material: plastic t-nut with steel insert

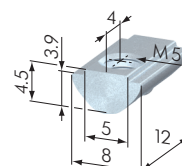
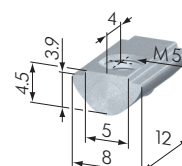

SV2148S
T-Nuts mini

Thread	M 4	M 4 VA	M 5	M 5 VA
Part No	SV2192V	SV2194V	SV2193V	SV2195V
Weight	2 g	2 g	2 g	2 g



Application: T-nut for swiveling into the t-slot. Fits into the t-slot at any point. Held in position by a spring-loaded ball. Raised area fits into groove to stop twisting.

Material: steel, zinc-plated

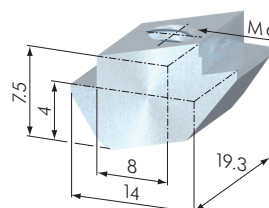

SV2193V

SV2195V
Square T-Nuts

Thread	M 4	M 5	M 6
Part No	SV2178N	SV2179N	SV2180N



Application: T-nut for swiveling into the t-slot. Fits into the t-slot at any point.

Material: GDZn (zinc diecasting)


SV2180N
Double T-Nuts 40 / 20

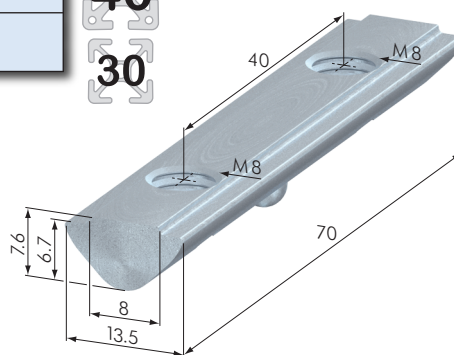
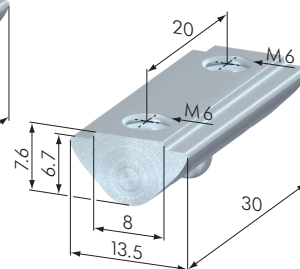
Thread	40 M 8	20 M 6
Part No	SV2202V	SV2210V



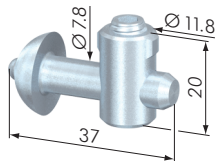
Application: T-nut for swiveling into the groove. Fits into the t-slot at any point. For fixing of foot plates and any other accessories that require a fixing pitch of 40 mm x M 8 (20 mm x M 6 respectively) thread. Raised area fits into t-slot to stop twisting.

SV2202V: bore hole distance: 40 mm
thread: M 8

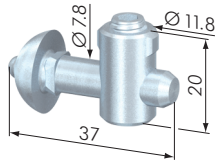
SV2210V: bore hole distance: 20 mm
thread: M 6


SV2202V

SV2210V

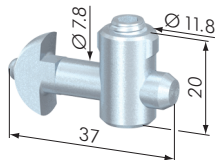
Material: steel, zinc-plated



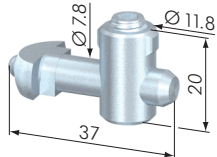
SV1001V



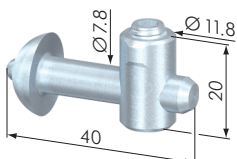
SV1211V



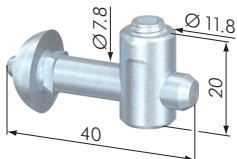
SV1011V



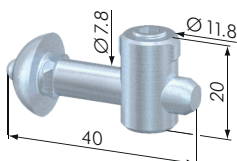
SV1021V



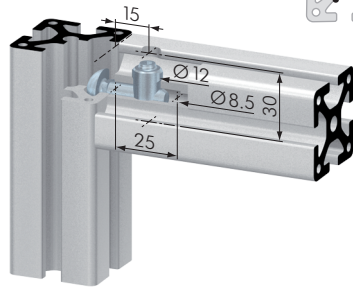
SV1213V



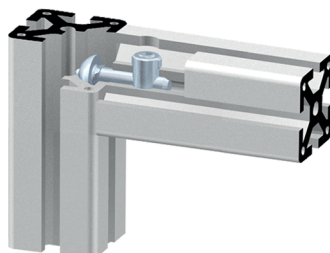
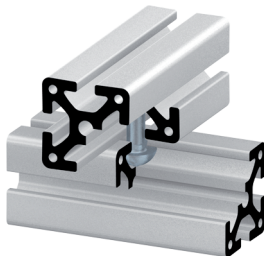
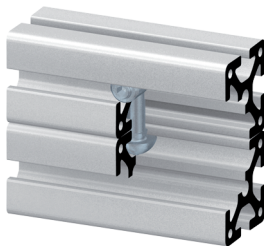
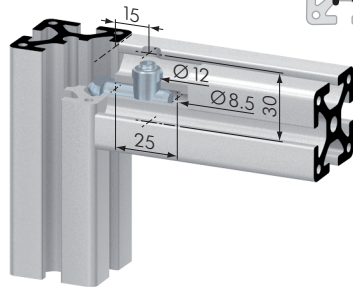
SV1221V



SV1222V



SV1212V



40

40

40

Central Fastener 40 S / SV

Part No	Description	Weight
SV1001V	Central Fastener 40 S	28 g
SV1353V	Central Fastener 40 S VA	29 g
SV1211V	Central Fastener 40 SV	28 g
SV1212V	Central Fastener 40 SV ON	27 g
SV1350V	Central Fastener 40 SV VA	30 g
SB1332	Machining Central Fastener	

Application: All-purpose universal fastener. The slide-in anchor is held in position in the profile groove by a spring-loaded ball in the opposing profile t-slot. The SV fasteners have an anti-twist feature. The SV ON fastener is to be used with closed profiles.

Material: steel, zinc-plated or stainless-steel

Assembly:

- bore hole for the barrel housing:
Ø 12 mm, 15 mm from profile end, 30 mm deep
- bore for center hole on end of profile for anchor:
Ø 8.5 mm, 25 mm deep

Central Fastener 40 EL / EQ

Part No	Description	Weight
SV1011V	Central Fastener 40 EL	26 g
SV1351V	Central Fastener 40 EL VA	26 g
SV1021V	Central Fastener 40 EQ	26 g
SV1352V	Central Fastener 40 EQ VA	26 g
SB1332	Machining Central Fastener	

Application: All-purpose universal fastener. The twist-in anchor, with an anti-twist feature, can be fixed in the profile groove at any point. The anchor is held in position by a spring-loaded ball in the opposing profile t-slot.

Material: steel, zinc-plated or stainless-steel

Assembly:

- bore hole for the barrel housing:
Ø 12 mm, 15 mm from profile end, 30 mm deep
- bore for center hole on end of profile for anchor:
Ø 8.5 mm, 25 mm deep

Central Fastener 40 SL / SVL

Part No	Description	Weight
SV1213V	Central Fastener 40 SL	30 g
SV1221V	Central Fastener 40 SVL	31 g
SV1222V	Central Fastener 40 SVLL	
SB1332	Machining Central Fastener	

Application: Special applications. The slide-in anchor, with an anti-twist feature, can be fixed in the profile t-slot at any point. The anchor is held in position by a spring-loaded ball in the opposing profile t-slot. The SVL fastener has an anti-twist feature. Both fasteners can be used for parallel and transverse connections.

Material: steel, zinc-plated

Assembly:

- bore hole for the barrel housing:
Ø 12 mm, 20 mm from profile end, 30 mm deep
- bore for anchor in the profile:
Ø 8.5 mm, 20 mm from profile end, 25 mm deep

Central Fastener 40 NL / NQ

Part N°	Description	Weight
SV1031V	Central Fastener 40 NL	28 g
SV1041V	Central Fastener 40 NQ	28 g
SB1332	Machining Central Fastener	

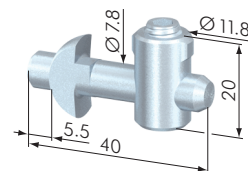
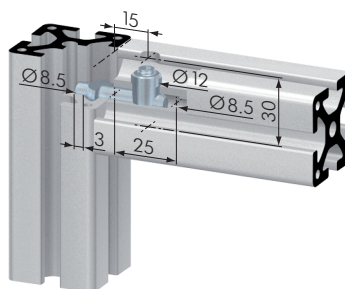
Application: Special applications. The twist-in anchor, with an anti-twist feature, can be fixed in the profile t-slot at any point. The fastener is used where high bending moments are required.

Material: steel, zinc-plated

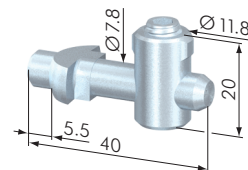
Assembly:

- bore hole for the barrel housing:
Ø 12 mm, 15 mm from profile end, 30 mm deep
- bore for center hole on end of profile for anchor:
Ø 8.5 mm, 25 mm deep
- hole for locking pin on anchor in opposing profile:
Ø 8.5 mm, 20 mm from profile end, 3 mm deep

40



SV1031V



SV1041V

Central Fastener 40 G

Part N°	Description	Weight
SV1071V	Central Fastener 40 G	22 g
SB1332	Machining Central Fastener	

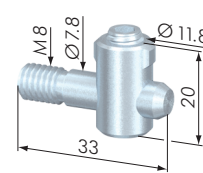
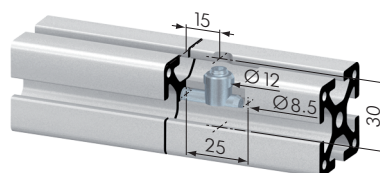
Application: Butt fastener. Used for joining two profiles end to end or for frontal attaching of plates. The anchor is screwed into the opposing profile or plate.

Material: steel, zinc-plated

Assembly:

- bore hole for the barrel housing:
Ø 12 mm, 15 mm from profile end, 30 mm deep
- bore for center hole on end of profile for anchor:
Ø 8.5 mm, 25 mm deep

40



SV1071V

Central Fastener G 30 SS / G 45 SS

Part N°	Description	Weight
SV1111V	Central Fastener G 30 SS	56 g
SV1151V	Central Fastener G 45 SS	57 g
SB1332	Machining Central Fastener	

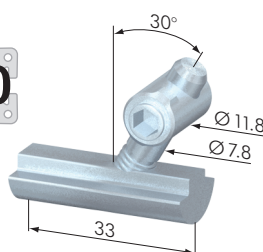
Application: The anchor is screwed into the t-nut at either 30° or 45°. Special angles are available on request.

Material: steel, zinc-plated

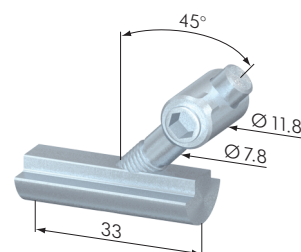
Assembly:

- bore hole for the barrel housing:
Ø 12 mm, 27 mm (35 mm) from profile end, 30 mm deep
- bore for center hole on end of profile for anchor:
Ø 8.5 mm, 25 mm deep

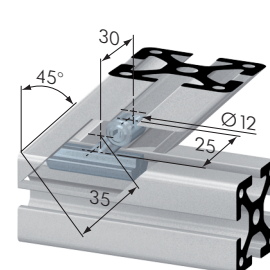
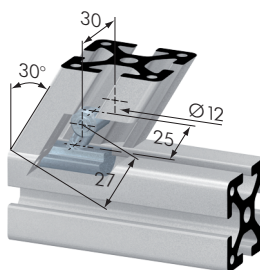
40

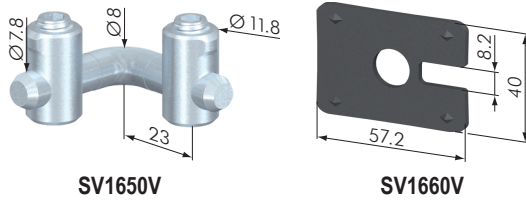


SV1111V



SV1151V





SV1650V

SV1660V

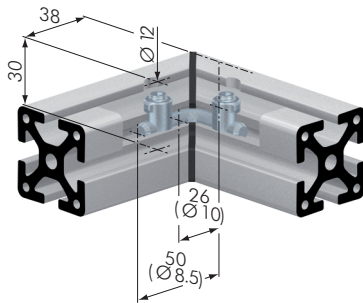
40

Central Fastener 40 90°

Part No	Description	Weight
SV1650V	Central Fastener 40 90°	42 g
SV1660V	Plastic Corner 40 90°	8 g
SB1332	Machining Central Fastener	

Application: Fastener for 90° mitered joint, cut angle is 45°.**Material:** fastener: steel, zinc-plated
plastic corner: POM, black**Assembly:**

- bore hole for the barrel housing (2x):
Ø 12 mm, 38 mm from profile end, 30 mm deep
- bore for center hole on end of profile for anchor (2x):
Ø 8.5 mm, 50 mm deep; Ø 10 mm, 26 mm deep



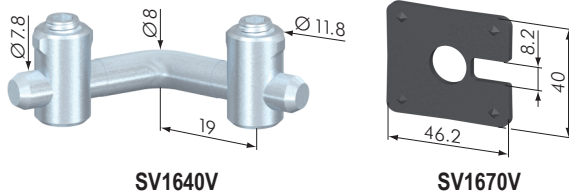
40

Central Fastener 40 120°

Part No	Description	Weight
SV1640V	Central Fastener 40 120°	40 g
SV1670V	Plastic Corner 40 120°	6 g
SB1332	Machining Central Fastener	

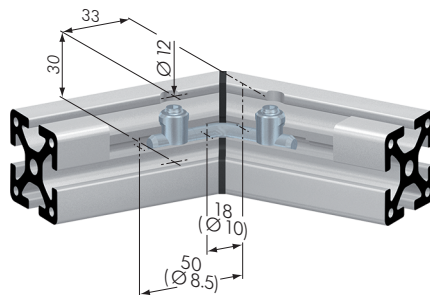
Application: Fastener for 60° mitered joint, cut angle is 60°.**Material:** fastener: steel, zinc-plated
plastic corner: POM, black**Assembly:**

- bore hole for the barrel housing (2x):
Ø 12 mm, 33 mm from profile end, 30 mm deep
- bore for center hole on end of profile for anchor (2x):
Ø 8.5 mm, 50 mm deep; Ø 10 mm, 26 mm deep



SV1640V

SV1670V



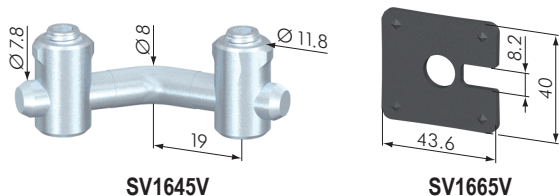
40

Central Fastener 40 135°

Part No	Description	Weight
SV1645V	Central Fastener 40 135°	42 g
SV1665V	Plastic Corner 40 135°	6 g
SB1332	Machining Central Fastener	

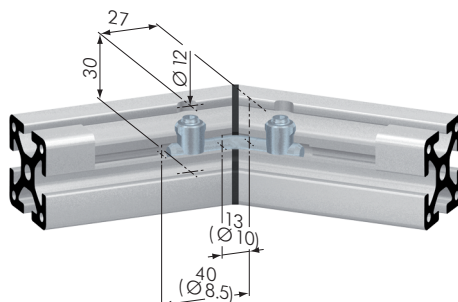
Application: Fastener for 45° mitered joint, cut angle is 67.5°.**Material:** fastener: steel, zinc-plated
plastic corner: POM, black**Assembly:**

- bore hole for the barrel housing (2x):
Ø 12 mm, 27 mm from profile end, 30 mm deep
- bore for center hole on end of profile for anchor (2x):
Ø 8.5 mm, 40 mm deep; Ø 10 mm, 26 mm deep



SV1645V

SV1665V



Central Fastener 40 GC / GCV

Part N°	Description	Weight
SV1301V	Central Fastener 40 GC	30.7 g
SV1311V	Central Fastener 40 GCV	40.8 g
SB1332	Machining Central Fastener	

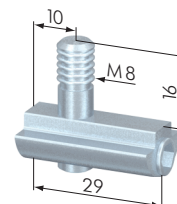
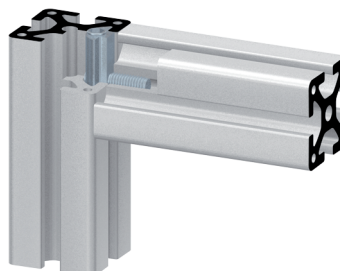
Application: All-purpose universal fastener. Uses a slide-in t-nut with locking grub screw. The anchor with M8 thread is screwed into the opposing profile. The Central Fastener 40 GCV includes an anti-twist feature.

Material: steel, zinc-plated

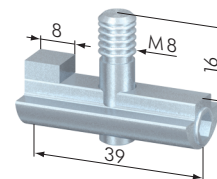
Assembly:

- Slide t-nut portion into the t-slot from the end of the profile.
- tap center hole of mating profile with an M8 thread and screw in threaded anchor. Twist to orient »diveted« portion of fastener so that it is facing the same direction as the barrel housing.

40



SV1301V



SV1311V

Central Fastener 40 SPS / SVPS

Part N°	Description	Weight
SV1231V	Central Fastener 40 SPS	35 g
SV1241V	Central Fastener 40 SVPS	35 g
SB1332	Machining Central Fastener	

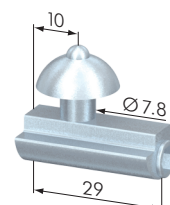
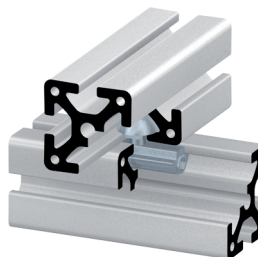
Application: All purpose universal fastener. The anchor must be positioned in the profile t-slot from the end of the profile and is held in position by a spring-loaded ball. The Central Fastener 40 SVPS has an anti-twist feature. No drilling required.

Material: steel, zinc-plated

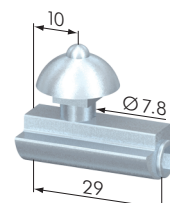
Assembly:

- Slide anchor into the t-slot profile which is to be connected.
- Slide t-nut portion of into the t-slot from the end of the profile.
- Lock in anchor with set screw located in t-nut portion of fastener.

40



SV1231V



SV1241V

Central Fastener 40 EVLS / EVQS

Part N°	Description	Weight
SV1251V	Central Fastener 40 EVLS	32 g
SV1261V	Central Fastener 40 EVQS	32 g
SB1332	Machining Central Fastener	

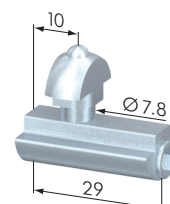
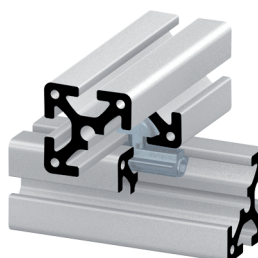
Application: Suitable for 90° and parallel profile connections. The anchor can be twisted into the profile t-slot at any point. No drilling required.

Material: steel, zinc-plated

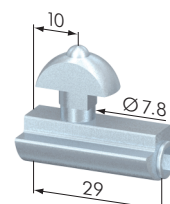
Assembly:

- Slide or twist in anchor into the t-slot profile which is to be connected.
- Slide or twist in t-nut portion into the t-slot from the end of the profile.
- Lock in anchor with set screw located in t-nut portion of fastener.

40

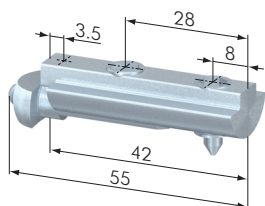


SV1261V

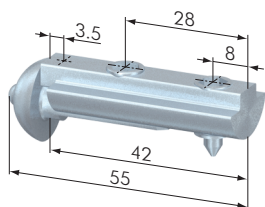


SV1251V

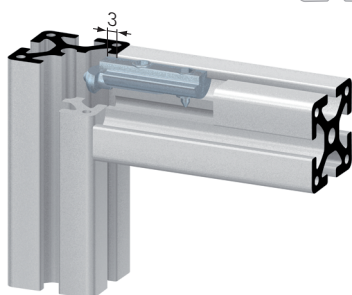
40



SV0101V



SV0102V

**Quick Fastener 40**

Part No	Description	Weight
SV0101V	Quick Fastener 40	46 g
SV0102V	Quick Fastener 40 S	47 g

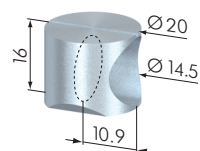
Application: No machining of either profile is required when using this fastener. The RH grub screw is driven into the profile to retain the t-nut, the LH grub retains and tensions the anchor during the fastening process. The anchor has an anti-twist feature.

Material: steel, zinc-plated

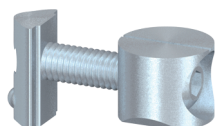
Assembly:

- Insert the t-nut portion of fastener so that the anti-twist feature protrudes 3 mm over the end of the profile.
- Screw in the cone point set screw on the t-nut portion of fastener into the profile.
- Insert the anchor into the t-slot of the mating profile and tighten into place by means of the set screw on the t-nut portion of the fastener.

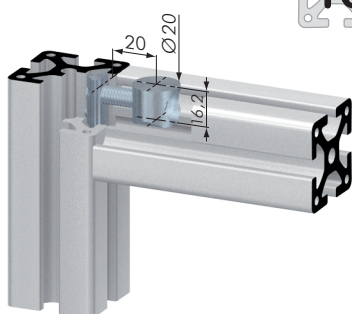
40



SV1800V



SV1801V

**Universal Fastener 40**

Part No	Description	Weight
SV1800V	Universal Fastener 40	21.5 g
SV1801V	Universal Fastener Set 40	43.3 g
SB1350	Machining Universal Fastener	

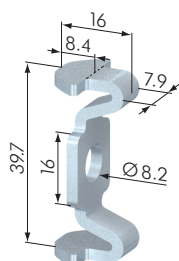
Application: Standard fastener with universal applications. The push-in t-nut can be swiveled into the profile t-slot at any point and is held in position by a spring-loaded ball.

Material: steel, zinc-plated

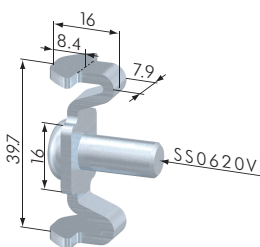
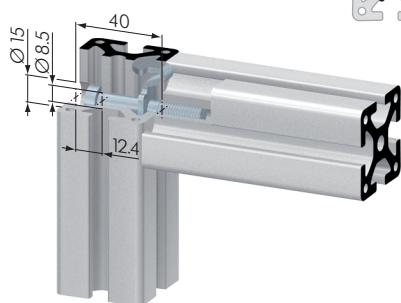
Assembly:

- Insert t-nut into the t-slot of profile.
- bore hole for the fastener housing:
Ø20 mm, 20 mm from the profile end, 16 mm deep

40



SV1900V



SV1915V

Standard Connector 40

Part No	Description	Weight
SV1900V	Standard Connector 40	14 g
SV1915V	Standard Connector Set 40	21 g

Application: An inexpensive and simple connection for profiles. The t-slot is not deformed when the joint is made, giving greater stability to the joint. At the same time, the fastener guarantees no twisting of the joined profiles.

Material: steel, zinc-plated

Assembly:

- bore hole for Km 8:
Ø8.5 mm, 20 mm from the profile end, 40 mm deep
- bore for cap screw head:
Ø15 mm, 20 mm from the profile end, 12.4 mm deep
- Tap center hole of mating profile with an M8 thread

Automatic Connector 40

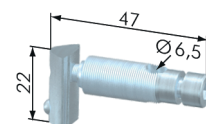
Part No	Description	Weight
SV1700V	Automatic fastening set 40	
SV1705V	Automatic fastening set 40 VA	

Application: No machining of either profile is required when using this fastener. If possible use in pairs.

Material: steel, zinc-plated or stainless-steel

Assembly: The fastener is screwed into a profile groove in the end face. It was recommended to use a lubricant.

40



SV1700V

Central Fastener 30 S / SV

Part No	Description	Weight
SV1610V	Central Fastener 30 S	17.3 g
SV1620V	Central Fastener 30 SV	17.4 g
SB1332	Machining Central Fastener	

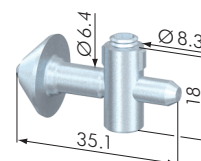
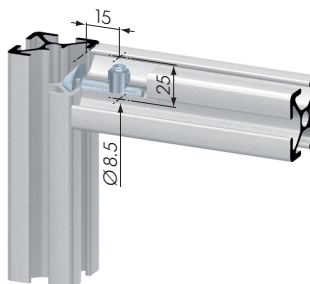
Application: All-purpose universal fastener. The slide-in anchor is held in position in the profile t-slot by a spring-loaded ball in the opposing profile groove. The Central Fastener 30 SV has an anti-twist feature.

Material: steel, zinc-plated

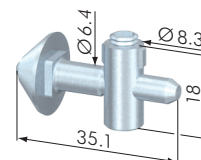
Assembly:

- Bore hole for the barrel housing: Ø8.5 mm, 15 mm from profile end, 25 mm deep
- bore for center hole – not required

30



SV1610V



SV1620V

Central Fastener 30 EL / EQ

Part No	Description	Weight
SV1601V	Central Fastener 30 EL	16 g
SV1600V	Central Fastener 30 EQ	16 g
SB1332	Machining Central Fastener	

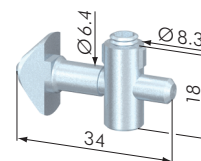
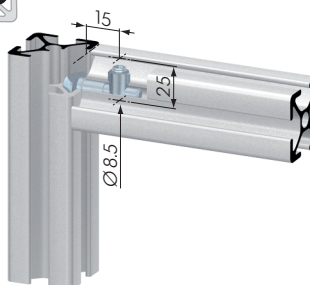
Application: All-purpose universal fastener. The twist-in anchor, with an anti-twist feature, can be fixed in the profile t-slot at any point. The anchor is held in position by a spring-loaded ball in the opposing profile t-slot.

Material: steel, zinc-plated

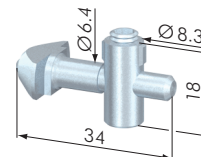
Assembly:

- Bore hole for the barrel housing: Ø8.5 mm, 15 mm from profile end, 25 mm deep
- bore for center hole – not required

30



SV1601V



SV1600V

Central Fastener 30 G

Part No	Description	Weight
SV1072V	Central Fastener 30 G	8 g
SB1332	Machining Central Fastener	

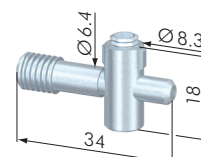
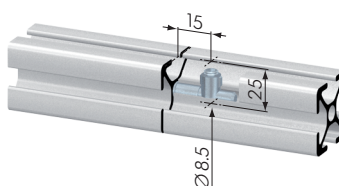
Application: Butt fastener. Used for joining two profiles end to end. The anchor is screwed into the opposing profile or plate.

Material: steel, zinc-plated

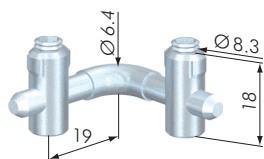
Assembly:

- Tap center hole of mating profile with an M8 thread to orient »diveted« portion of fastener so that it is facing the direction as the barrel housing.

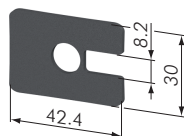
30



SV1072V



SV1602V



SV1661V

30

Central Fastener 30 90°

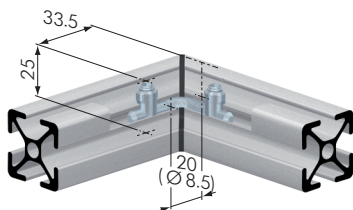
Part N°	Description	Weight
SV1602V	Central Fastener 30 90°	28 g
SV1661V	Plastic Corner 30 90°	
SB1332	Machining Central Fastener	

Application: Fastener for 90° mitered joint, cut angle is 45°.

Material: fastener: steel, zinc-plated
plastic corner: POM, black

Assembly:

- bore hole for the barrel housing (2x):
Ø8.5 mm, 33.5 mm from profile end, 25 mm deep
- bore for center hole on end of profile for anchor (2x):
Ø8 mm, 20 mm deep



30

Quick Fastener 30

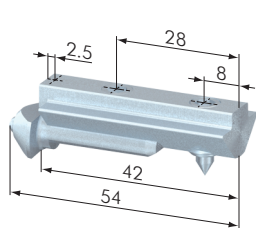
Part N°	Description	Weight
SV0104V	Quick Fastener 30	40 g

Application: No machining of either profile is required when using this fastener. The RH grub screw is driven into the profile to retain the t-nut, the LH grub screw retains and tensions the anchor during the fastening process. The anchor has an anti-twist feature.

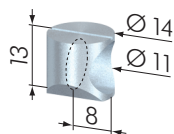
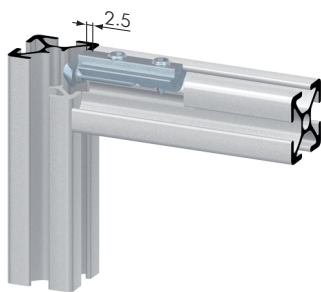
Material: steel, zinc-plated

Assembly:

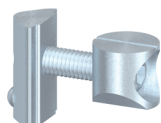
- Insert the t-nut portion of fastener so that the anti-twist feature protrudes 2.5 mm over the end of the profile edge.
- Screw in the cone point set screw on the t-nut portion of fastener into the profile.
- Insert the anchor into the t-slot of the mating profile and tighten into place by means of the t-nut portion of the fastener.



SV0104V



SV1802V



SV1803V

30

Universal Fastener 30

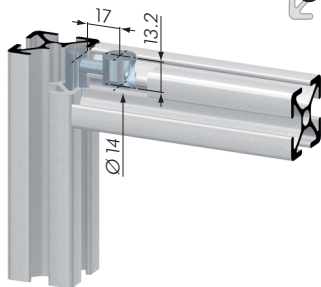
Part N°	Description	Weight
SV1802V	Universal Fastener 30	8 g
SV1803V	Universal Fastener Set 30	23 g
SB1351	Machining Universal Fastener	

Application: Universal applications. Uses a slide-in t-nut with locking grub screw.

Material: steel, zinc-plated

Assembly:

- Insert t-nut into the t-slot of profile.
- bore hole for fastener housing:
Ø14 mm, 15 mm from the profile end, 12.7 mm deep



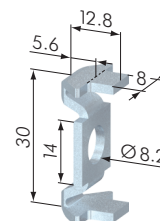
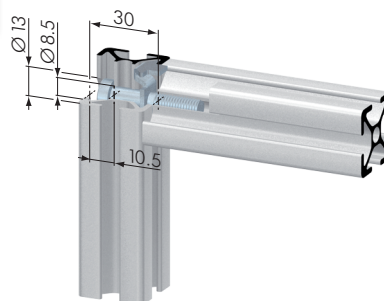
Standard Connector 30

Part Nº	Description	Weight
SV1910V	Standard Connector 30	12 g

Application: An inexpensive and simple connection for profiles. The t-slot is not deformed when the joint is made, giving greater stability to the joint. At the same time, the fastener guarantees no twisting of the joined profiles.

Material: steel, zinc-plated

- Assembly:**
- Insert the standard fastener into the t-slot from the end of the profile
 - bore hole for Km 8: $\varnothing 8.5$ mm, 15 mm from the profile end, 30 mm deep
 - bore for cap screw head: $\varnothing 13$ mm, 15 mm from the profile end, 10.5 mm deep
 - Tap center hole of mating profile with an M8 thread.

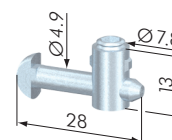
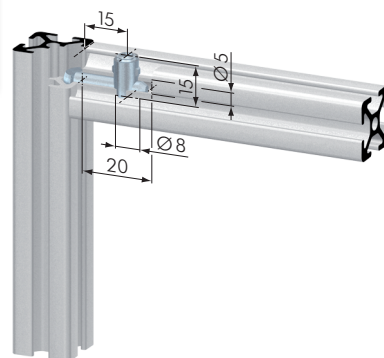
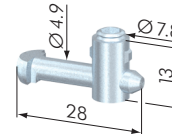
30

SV1910V
Central Fastener 20 EL / EQ

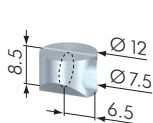
Part Nº	Description	Weight
SV1501V	Central Fastener 20 EL	8 g
SV1500V	Central Fastener 20 EQ	8 g
SB1332	Machining Central Fastener	

Application: All-purpose universal fastener. The twist-in anchor, with an anti-twist feature, can be fixed in the profile t-slot at any point.

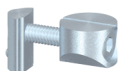
Material: steel, zinc-plated

- Assembly:**
- bore hole for the barrel housing: $\varnothing 8$ mm, 15 mm from the profile end, 15 mm deep
 - bore for center hole on end of profile for anchor: $\varnothing 5$ mm, 25 mm deep

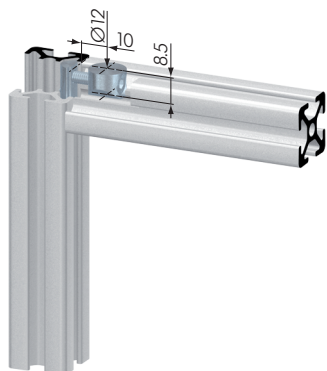
20

SV1501V

SV1500V



SV1804V



SV1805V



20

Universal Fastener 20

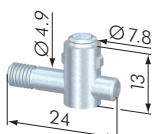
Part N°	Description	Weight
SV1804V	Universal Fastener 20	4 g
SV1805V	Universal Fastener Set 20	8 g
SB1352	Machining Universal Fastener	

Application: Universal applications. Uses a slide-in t-nut with locking grub screw.

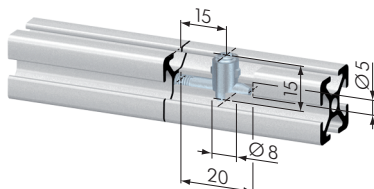
Material: steel, zinc-plated

Assembly:

- Insert t-nut into the t-slot of profile.
- bore hole for fastener housing:
Ø 12 mm, 10 mm from the profile end, 8.5 mm deep



SV1073V



20

Central Fastener 20 G

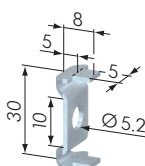
Part N°	Description	Weight
SV1073V	Central Fastener 20 G	6 g
SB1332	Machining Central Fastener	

Application: Butt fastener. Used for joining two profiles end to end. The anchor is screwed into the opposing profile or plate.

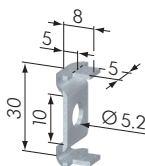
Material: steel, zinc-plated

Assembly:

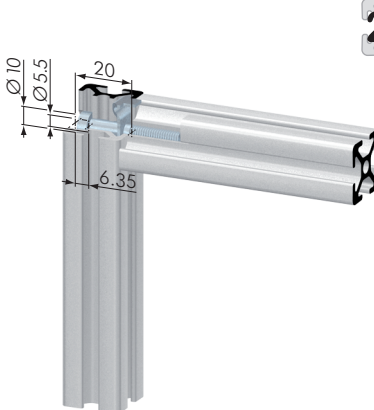
- bore hole for the barrel housing:
Ø 8 mm, 15 mm from the profile end, 15 mm deep
- bore for center hole on end of profile for anchor:
Ø 5 mm, 20 mm deep
- Tap center hole of mating profile with an M 5 thread and screw in threaded anchor. Twist 1-2 revolutions from the end of thread to orient »diveted« portion of fastener so that it is facing the same direction as the barrel housing.



SV1912V



SV1913V



20

Standard Connector 20

Part N°	Description	Weight
SV1912V	Standard Connector 20	12 g
SV1913V	Standard Connector 20 VA	13 g

Application: An inexpensive and simple connection for profiles. The t-slot is not deformed when the joint is made, giving greater stability to the joint. At the same time, the fastener guarantees no twisting of the joined profiles.

Material: steel, zinc-plated

Assembly:

- Insert the standard fastener 20 into the t-slot from the end of the profile.
- bore hole for Km 5:
Ø 5.5 mm, 15 mm from the profile end, 20 mm deep
- bore for cap screw head:
Ø 10 mm, 10 mm from the profile end, 6.35 mm deep
- Tap center hole of mating profile with an M 5 thread.

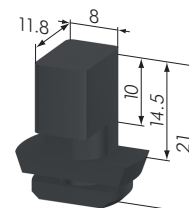
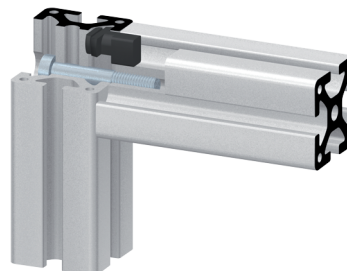
Locator Block

Part N°	Description	Weight
SZ3000S	Locator Block	3 g

Application: Installation accessory and anti-twist feature device for simple screw and central fastener connections in the 40 profile range.

Material: PA, black

40



SZ3000S

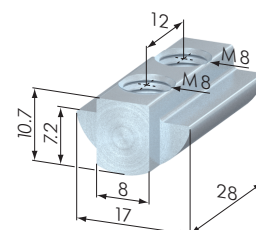
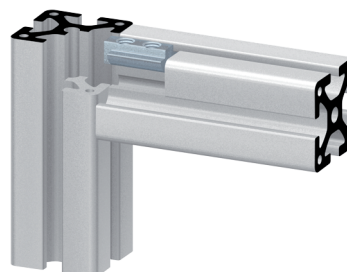
Special T-Nut

Part N°	Description	Weight
SV2060V	Special T-Nut	21 g

Application: Provides anti-twist security used for heavy loads.

Material: steel, zinc-plated

40



SV2060V

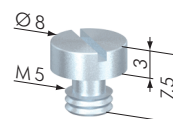
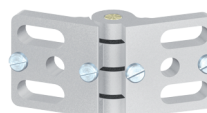
Anti-Twist Set Screw

Part N°	Description	Weight
SS9900V	Anti-Twist Set Screw	1.4 g

Application: Anti-twist set screw for hinges and other applications.

Material: steel, zinc-plated

40



SS9900V

Doweling T-Nut

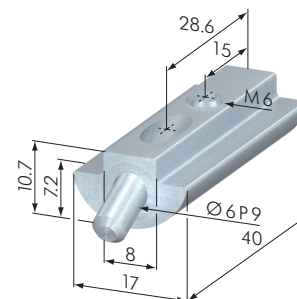
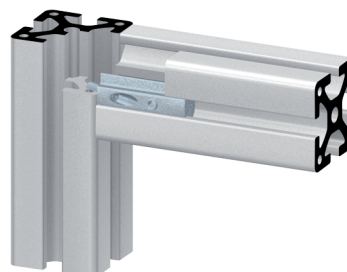
Part N°	Description	Weight
SV2070V	Doweling T-Nut	35 g

Application: Prevents movement caused by heavy loads. Can also be used to stop aligned profiles from moving.

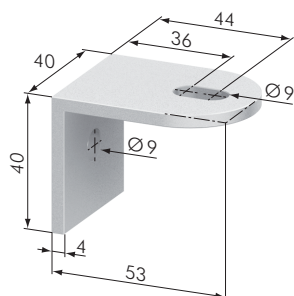
Resilience against movement per element – up to 3kN.

Material: steel, zinc-plated

40



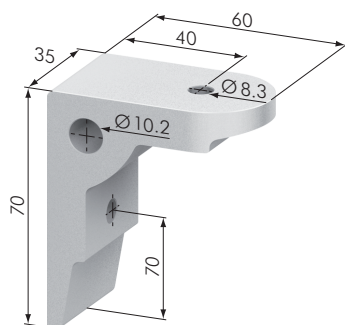
SV2070V



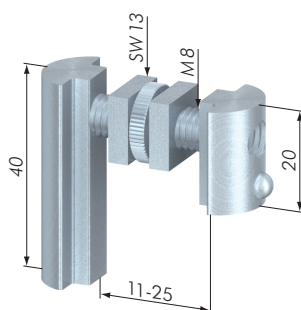
SZ8000N



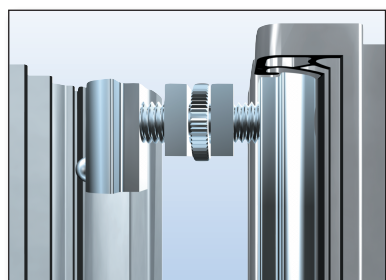
SZ8005N



SZ8001N



SZ8010N



Angle 40 x 60

Part №	Description	Weight
SZ8000N	Angle 40 x 60	31.5 g

Application: For attaching and adjusting protection panels.

Gap adjustment: 16 - 24 mm

Material: aluminum, natural anodized

Supply:

- 1x attachment screw M8 / L 24
- 1x screw M8 x 20, DIN 7380, washer



Bolt G-type

Part №	Description	Weight
SZ8005N	Bolt G-type	66.1 g

Application: For the centering of protection panels.

The bolt G-type gears with the angle 60 x 70.

Material: steel, zinc-plated



Angle 60 x 70

Part №	Description	Weight
SZ8001N	Angle 60 x 70	113.5 g

Application: Panel support angle with bolt for angular adjustment of panels.

Material: aluminum, natural anodized

Supply:

- 1x SS2330V attachment screw M8 / L 30
- 1x SZ8005N bolt type G



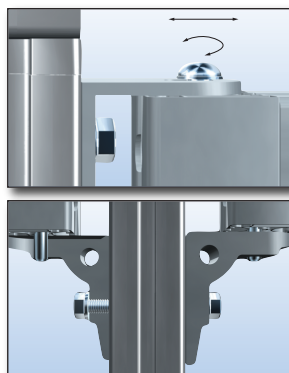
Holder, adjustable

Part №	Description	Weight
SZ8010V	Holder, adjustable	66.1 g

Application: Compensating mounting for protection panels.

Gap adjustment: 11 - 25 mm

Material: steel, zinc-plated

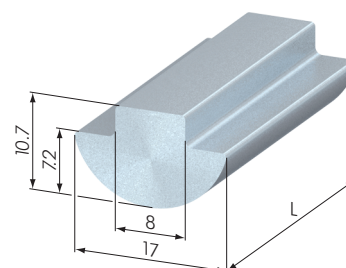


T-Nut Profile, slide-in

Part N°	Description	Weight
SV2570V3000	T-Nut Profile, slide-in, 3000 mm	2880 g
SV2571V	T-Nut Profile, slide-in, cut	960 g/m

Application: For manufacturing t-nuts, maximum tapping size M 8.

Material: steel, blank



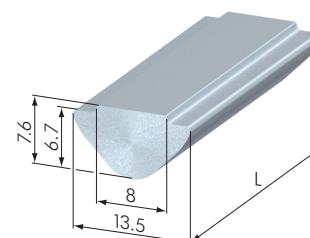
SV2570V

T-Nut Profile, push-in

Part N°	Description	Weight
SV2560V3000	T-Nut Profile, push-in, 3000 mm	1605 g
SV2561V	T-Nut Profile, push-in, cut	536 g/m
Part N° VA	Description	Weight
SV2575V3000	T-Nut Profile stainless steel, push-in, 3000 mm	1605 g

Application: For manufacturing t-nuts, maximum tapping size M 8.

Material: steel, blank or stainless-steel



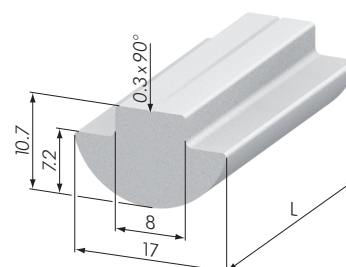
SV2560V

T-Nut Profile, aluminum, slide-in

Part N°	Description	Weight
SV2570N6000	T-Nut Profile, slide-in, 6000 mm	1986 g
SV2570N3000	T-Nut Profile, slide-in, 3000 mm	995 g
SV2571N	T-Nut Profile, slide-in, cut	332 g/m

Application: For manufacturing t-nuts, maximum tapping size M 8.

Material: aluminum, natural anodized



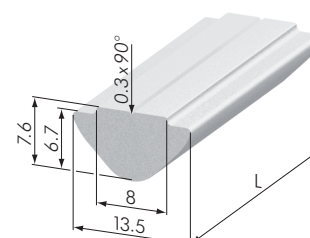
SV2570N

T-Nut Profile, aluminum, push-in

Part N°	Description	Weight
SV2560N6000	T-Nut Profile, push-in, 6000 mm	1110 g
SV2560N3000	T-Nut Profile, push-in, 3000 mm	555 g
SV2561N	T-Nut Profile, push-in, cut	185 g/m

Application: For manufacturing t-nuts, maximum tapping size M 8.

Material: aluminum, natural anodized



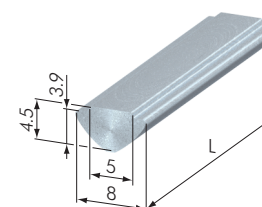
SV2560N

T-Nut Profile, mini

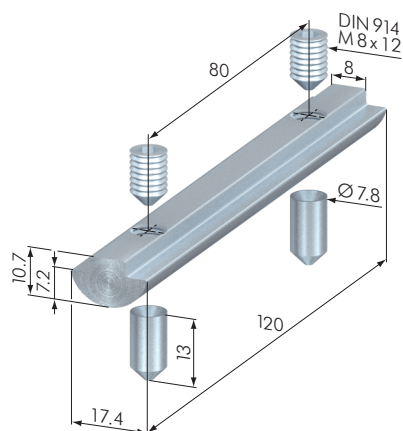
Part N°	Description	Weight
SV2080V3000	T-Nut Profile mini, 3000 mm	609 g
SV2581V	T-Nut Profile mini, cut	203 g/m

Application: For manufacturing t-nuts, maximum tapping size M 5.

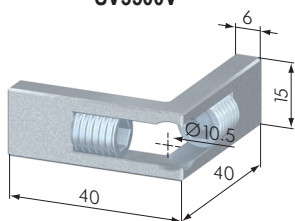
Material: steel, blank



SV2580V



SV3500V



SV1901V

40

Pneumatic Fastener 40

Part No	Description	Weight
SV3500V	Pneumatic Fastener 40	114 g

Application: For extending profile runs used as compressed air lines.

Can also be used to extend standard profile runs.

Material: steel, zinc-plated

Supply:

- 1x t-nut M 8, slide-in, L = 120 mm
- 2x tensioning bush
- 2x grub screw M 8 x 12, zinc-plated

40

Miter Connector 40 90°

Part No	Description	Weight
SV1901V	Miter Connector 40 90°	49 g

Application: For right angled joining of table profiles (SP2500N).

Material: steel, zinc-plated

40

Attachment Screws

Part No	Description	Weight
SS2225V	Attachment Screw M 6 / L 25	12 g
SS2230V	Attachment Screw M 6 / L 30	12 g
SS2240V	Attachment Screw M 6 / L 40	15 g
SS2330V	Attachment Screw M 8 / L 30	
SS2332V	Attachment Screw M 8 / L 32	20 g
SS2340V	Attachment Screw M 8 / L 40	22 g

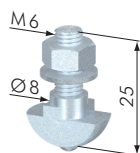
Application: Attaching accessories and sheet material to profiles.

The twist-in attachment screw, with an anti-twist feature, can be fixed in the profile groove at any point and is held in position by a spring-loaded ball.

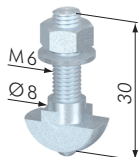
Material: steel, zinc-plated

Supply:

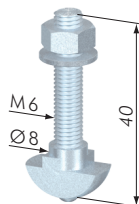
- 1x hexagon nut M 6 (M 8), DIN 934, Zn
- 1x washer M 6 (M 8), DIN 125
- 1x attachment screw M 6 (M 8) x L



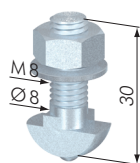
SS2225V



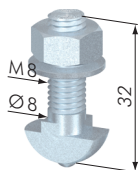
SS2230V



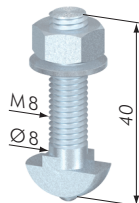
SS2240V



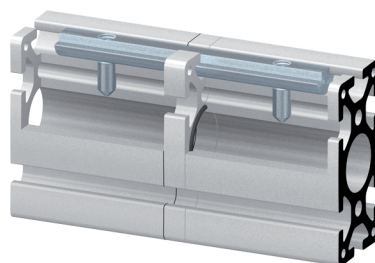
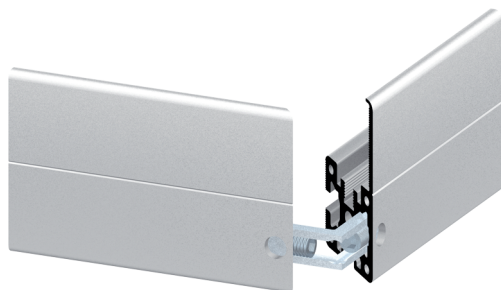
SS2330V



SS2332V



SS2340V



Heavy Duty Fasteners

Part No	Description	Weight
SV6000V	Heavy Duty Fastener 80 x 80 200 M 27	1.53 kg
SV6002V	Heavy Duty Fastener 80 x 80 160 M 27	1.18 kg
SV6005V	Heavy Duty Fastener 80 x 80 M 12	0.80 kg
SV6008V	Heavy Duty Fastener 80 x 120 M 12	
SV6010V	Heavy Duty Fastener 120 x 120 M 12	3.94 kg
SV6011V	Heavy Duty Fastener 120 x 120 M 27	4.30 kg

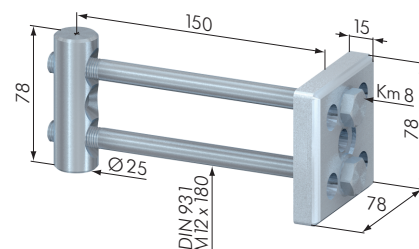
40

Application: For a stable and positive attachment of large profiles under heavy loads. Due to the large support area, high pressure forces can be achieved.

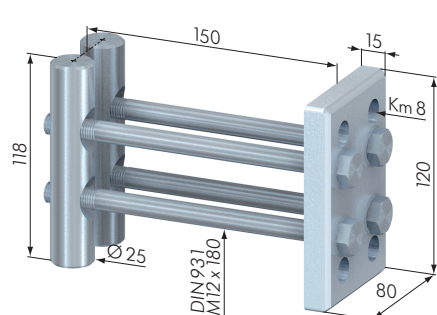
Material: steel, zinc-plated

Supply:

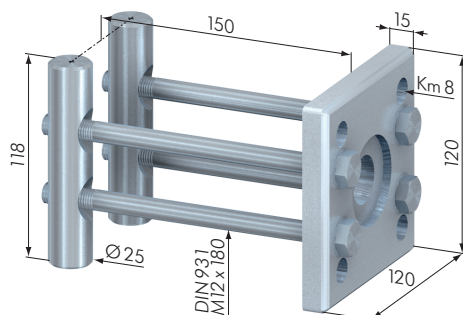
- 1x / 2x / 4x hexagon screw with washers
- 1x / 2x fastening bolt
- 1x traction plate



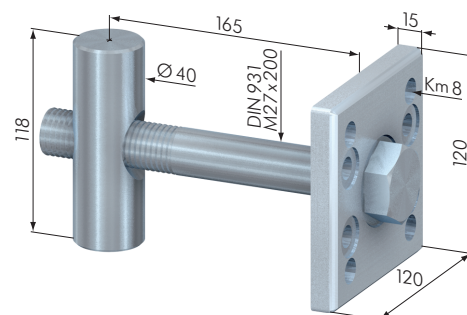
SV6005V



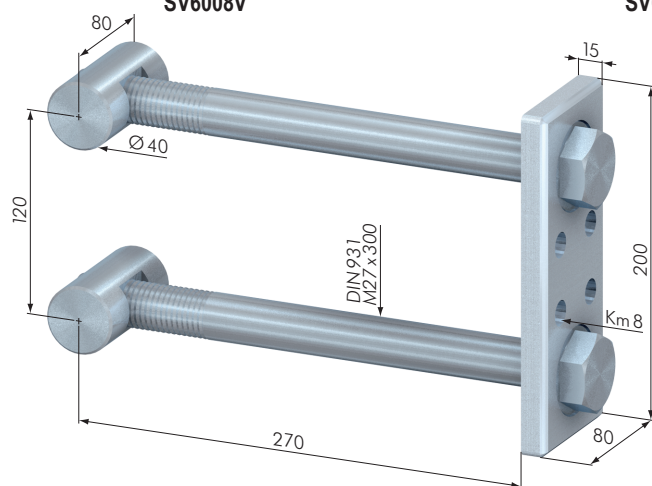
SV6008V



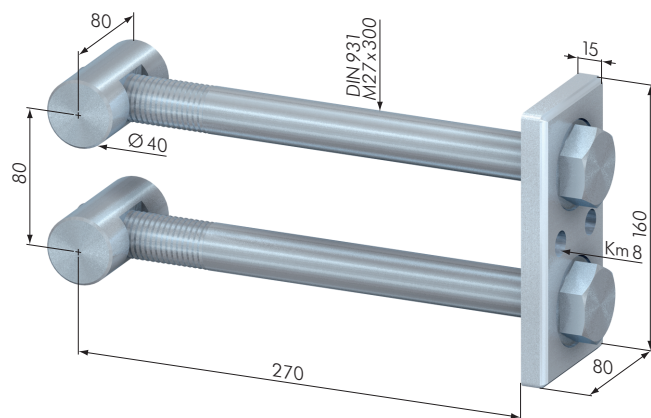
SV6010V



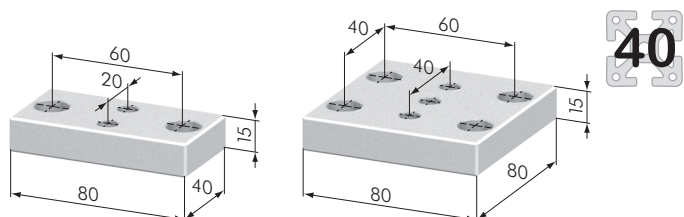
SV6011V



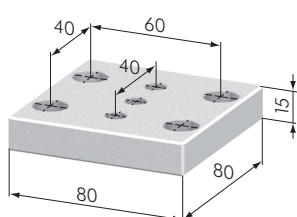
SV6000V



SV6002V



SV5001N



SV5002N



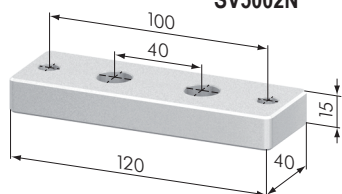
Attachment Plates

Part No	Description	Weight
SV5001N	Attachment Plate 80 x 40	130 g
SV5002N	Attachment Plate 80 x 80	260 g
SV5003N	Attachment Plate 80 x 120	390 g
SV5004N	Attachment Plate 80 x 160	520 g
SV5005N	Attachment Plate 80 x 200	650 g
SV5006N	Attachment Plate 40 x 120	190 g

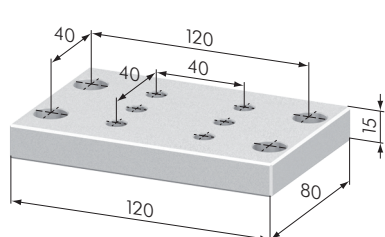
Application: To attach profiles onto assemblies, work benches, etc.
Can also be used to connect profiles one to another.

Material: aluminum, natural anodized

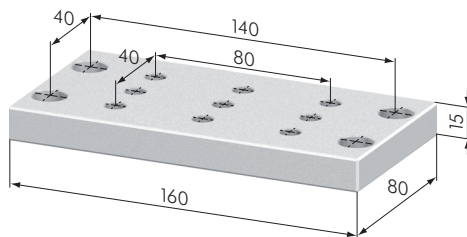
Supply: • attachment plate



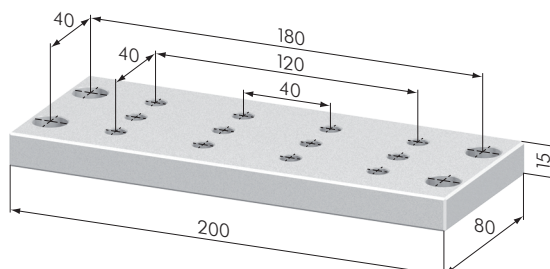
SV5006N



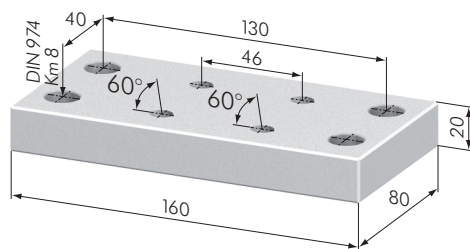
SV5003N



SV5004N



SV5005N



SV5016N



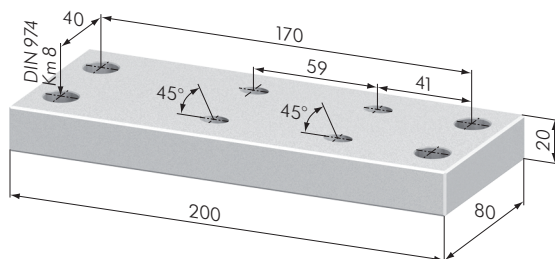
Attachment Plates

Part No	Description	Weight
SV5013N	Attachment Plate 30°, 80 x 280	1130 g
SV5014N	Attachment Plate 45°, 80 x 200	800 g
SV5016N	Attachment Plate 60°, 80 x 160	635 g

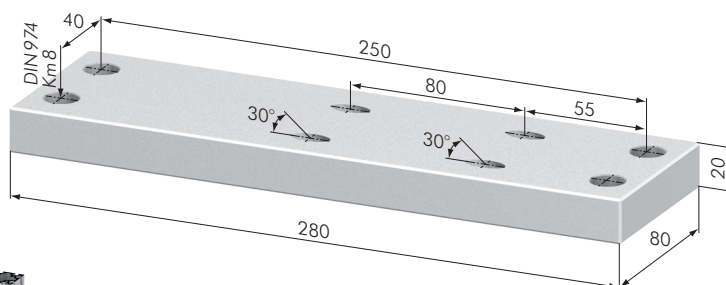
Application: For bracing two profiles by either attaching two 45° plates or one 30° plate and one 60° plate to the 80 x 80 profiles.

Material: aluminum, natural anodized

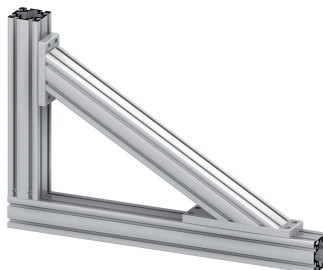
Supply: • 1x attachment plate



SV5014N



SV5013N



Step Fasteners

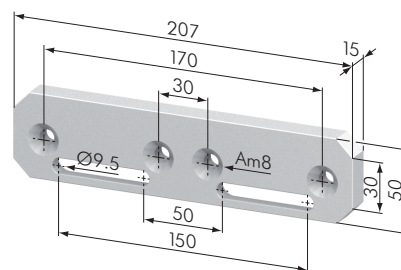
Part No	Description	Weight
SV3200N	Step Fastener 200	450 g
SV3202N	Step Fastener 250	489 g
SV3205N	Step Fastener 300	530 g

Application: One or two step fasteners are attached to the end of a length of tread profile (SP0610N or SP0620N) to make one complete step. The complete step is attached to the profile that makes the staircase. The pitch of the steps can be quickly varied by sliding the step up or down the staircase profile groove.

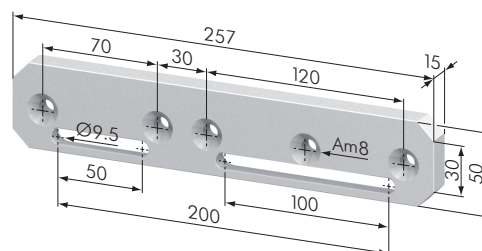
Material: aluminum, natural anodized



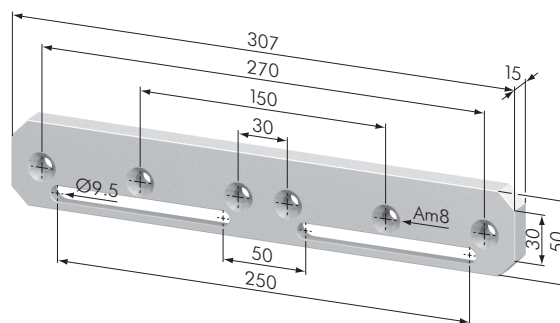
40



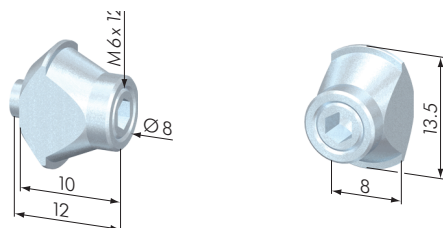
SV3200N



SV3202N



SV3205N



SZ7000N

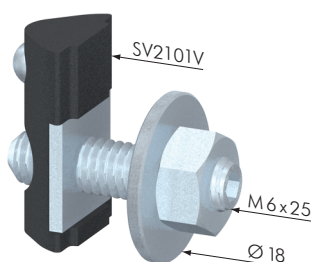


Potential Equalizers

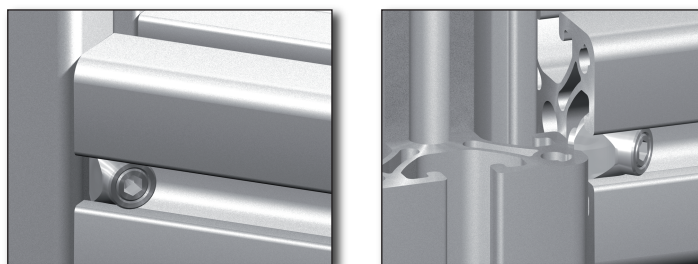
Part No	Description	Weight
SZ7000N	Potential Equalizer 40	4.7 g
SZ7001N	Potential Equalizer 30	

Application: For the bonding of machine frames. Establishes an electrical conductivity connection between two profiles. The potential equalizer must not be used to carry current or become description of a protective circuit.

Material: steel, zinc-plated



SZ6800N



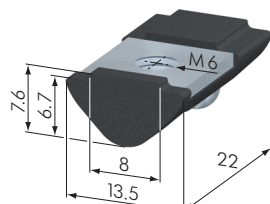
Earth Connection 40

Part No	Description	Weight
SZ6800N	Earth Connection 40	4.7 g

Application: Terminals for earthing machine frames etc.

Supply:

- 1x SSV2101V t-nut steel / plastic M6
- 1x grub screw M6x25, DIN 916
- 1x hexagon nut M6, DIN 934
- 1x brass screw 6.4 (M6), DIN 9021
- 1x brass lock washer A 6.4, DIN 6798



SV2101V

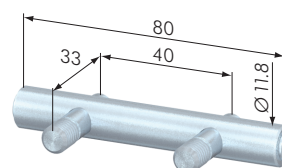
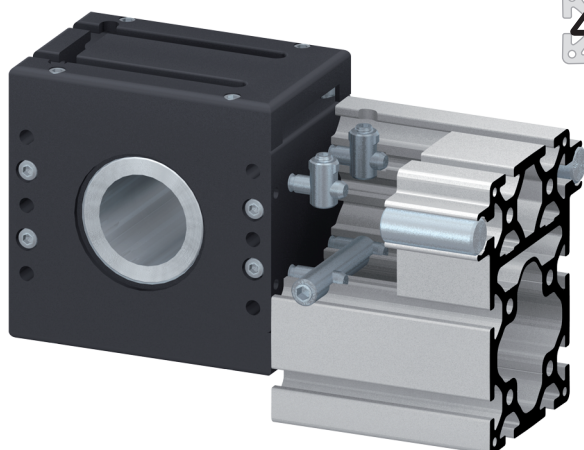


Special Fastener 120

Part No	Description	Weight
SV3100V	Special Fastener 120	76 g

Application: Used to attach the pulley assembly SL0680S to track profile SP8900N.

Material: steel, zinc-plated



SV3100V