

DC Centrifugal Blower MBD Series

Impeller Diameter $\phi 80$ mm



With Alarm

Operating Ambient Temperature: $-10\sim+60^{\circ}\text{C}$

Operating Voltage Range: $\pm 10\%$

Materials

Motor Case: Die cast aluminum

Casing: Die cast aluminum

Impeller: Aluminum

Overheat Protection: Built-in overheat protection circuit

Bearings: Ball bearings

$\phi 80$ mm

$\phi 100$ mm

$\phi 120$ mm

Specifications RoHS

| Product Name | Voltage VDC | Current A | Speed r/min | Maximum Air Flow m^3/min | Maximum Static Pressure Pa | Noise Level dB (A) |
|--|-----------------|-----------|-------------|--|----------------------------|--------------------|
| Standard Type | MBD8-24 | 24 | 2600 | 1.45 | 196 | 51 |
| | MBD8-48 | 48 | | | | |
| Low-speed Alarm, Contact Alarm Type <Alarm Specifications: ⑦> | MBD8-24A | 24 | 2600 | 1.45 | 196 | 51 |

● Alarm specifications ⑦ → Page F-17

Product Line

● Centrifugal Blowers

| Product Name |
|-----------------|
| MBD8-24 |
| MBD8-48 |
| MBD8-24A |

The following items are included in each product.
Centrifugal Blower, Operating Manual

● Fan Kit Products

◇ With Finger Guard

| Product Name |
|----------------------|
| T-MBD8-24-GA |
| T-MBD8-48-GA |
| T-MBD8-24A-GA |

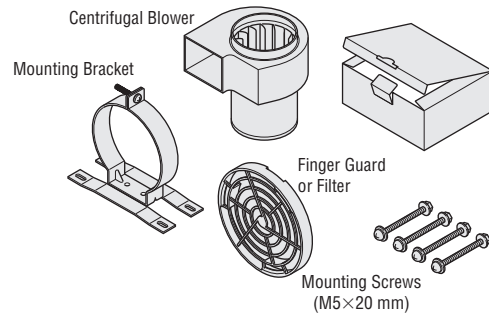
● With Finger Guard, Mounting Bracket, Mounting Screws

◇ With Filter

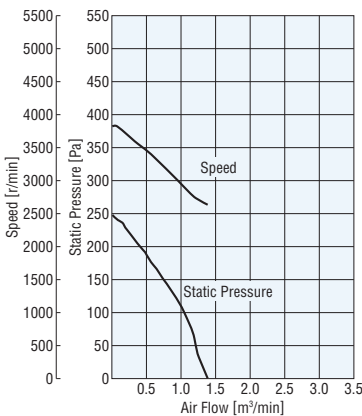
| Product Name |
|----------------------|
| T-MBD8-24-FA |
| T-MBD8-48-FA |
| T-MBD8-24A-FA |

● With Filter, Mounting Bracket, Mounting Screws

The following items are included in each kit.

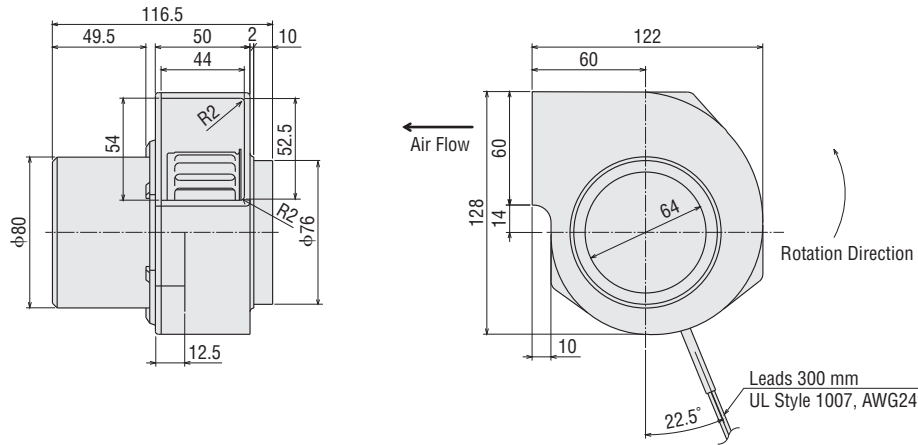


Air Flow – Static Pressure Characteristics

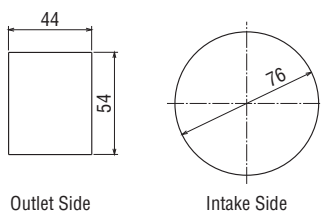


Dimensions (Unit = mm)

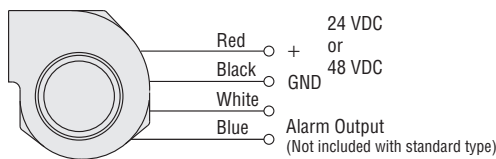
Mass: 1.1 kg



Panel Cut-Out (Unit = mm)



Connection Diagram



Accessories

| Product | Product Name | Page |
|------------------|--------------|-------|
| Finger Guard | FGB8 | F-120 |
| Filter | FLB8 | F-122 |
| Mounting Bracket | PAS4B | F-128 |
| Duct Joint | FD8 | F-129 |

Details of Pulse Sensor Type

Detailed information for the **MBD** Series pulse sensor type* is not listed in this catalogue, but this series is available for sale.

Please contact the nearest Oriental Motor sales office.

*Two pulses are output each rotation of the fan. Fan speed is monitored as the host controller, etc., reads the output pulses. This function helps you set a desired output speed for alarm activation.

Centrifugal Blowers

| Product Name |
|-----------------|
| MBD8-24S |
| MBD8-48S |

Fan Kit Products

| Type | Product Name |
|-------------------|----------------------|
| With Finger Guard | T-MBD8-24S-GA |
| | T-MBD8-48S-GA |
| With Filter | T-MBD8-24S-FA |
| | T-MBD8-48S-FA |

DC Centrifugal Blower

MBD Series

Impeller Diameter $\phi 100$ mm



With Alarm

Operating Ambient Temperature: $-10 \sim +60^{\circ}\text{C}$

Operating Voltage Range: $\pm 10\%$

Materials

Motor Case: Die cast aluminum

Casing: Die cast aluminum

Impeller: Aluminum

Overheat Protection: Built-in overheat protection circuit

Bearings: Ball bearings

$\phi 80$ mm

$\phi 100$ mm

$\phi 120$ mm

Specifications RoHS

| Product Name | Voltage VDC | Current A | Speed r/min | Maximum Air Flow m^3/min | Maximum Static Pressure Pa | Noise Level dB (A) |
|--|------------------|-----------|-------------|--|----------------------------|--------------------|
| Standard Type | MBD10-24 | 24 | 1.0 | 2400 | 1.95 | 294 |
| | MBD10-48 | 48 | 0.7 | | | |
| Low-speed Alarm, Contact Alarm Type <Alarm Specifications: ⑦> | MBD10-24A | 24 | 1.0 | 2400 | 1.95 | 294 |

● Alarm specifications ⑦ → Page F-17

Product Line

● Centrifugal Blowers

| Product Name |
|------------------|
| MBD10-24 |
| MBD10-48 |
| MBD10-24A |

The following items are included in each product.
Centrifugal Blower, Operating Manual

● Fan Kit Products

◇ With Finger Guard

| Product Name |
|-----------------------|
| T-MBD10-24-GA |
| T-MBD10-48-GA |
| T-MBD10-24A-GA |

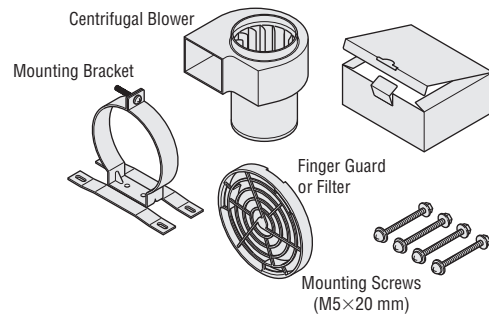
● With Finger Guard, Mounting Bracket, Mounting Screws

◇ With Filter

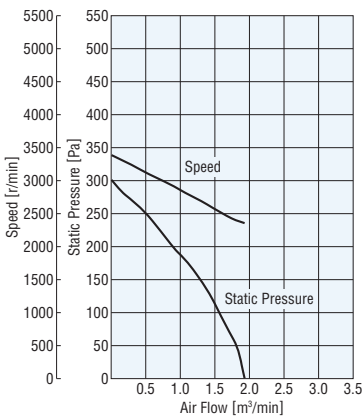
| Product Name |
|-----------------------|
| T-MBD10-24-FA |
| T-MBD10-48-FA |
| T-MBD10-24A-FA |

● With Filter, Mounting Bracket, Mounting Screws

The following items are included in each kit.

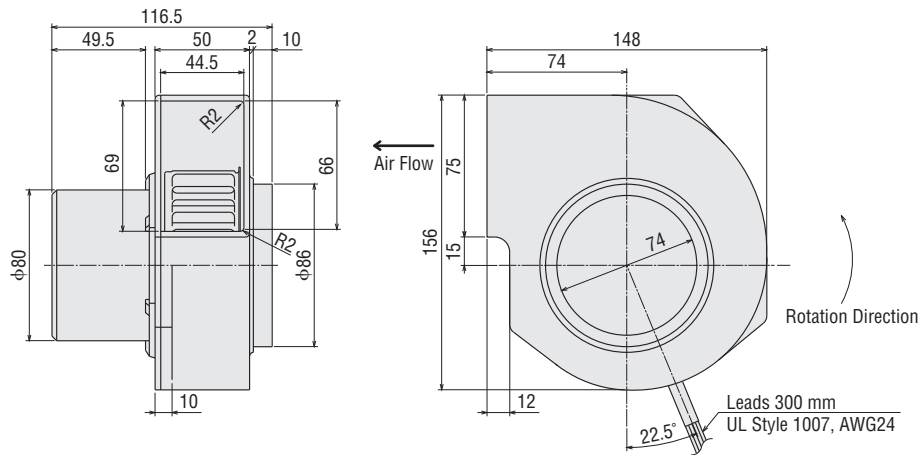


Air Flow – Static Pressure Characteristics

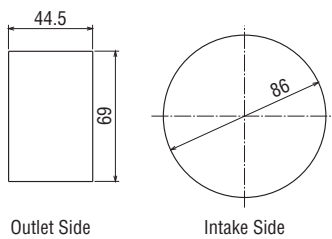


Dimensions (Unit = mm)

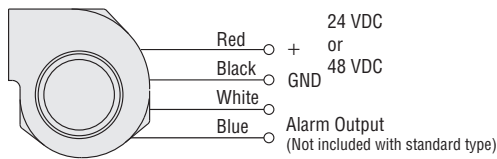
Mass: 1.2 kg



Panel Cut-Out (Unit = mm)



Connection Diagram



Accessories

| Product | Product Name | Page |
|------------------|--------------|-------|
| Finger Guard | FGB10 | F-120 |
| Filter | FLB10 | F-122 |
| Mounting Bracket | PAS4B | F-128 |
| Duct Joint | FD10 | F-129 |

Details of Pulse Sensor Type

Detailed information for the **MBD** Series pulse sensor type* is not listed in this catalogue, but this series is available for sale.

Please contact the nearest Oriental Motor sales office.

*Two pulses are output each rotation of the fan. Fan speed is monitored as the host controller, etc., reads the output pulses. This function helps you set a desired output speed for alarm activation.

Centrifugal Blowers

| Product Name |
|------------------|
| MBD10-24S |
| MBD10-48S |

Fan Kit Products

| Type | Product Name |
|-------------------|-----------------------|
| With Finger Guard | T-MBD10-24S-GA |
| | T-MBD10-48S-GA |
| With Filter | T-MBD10-24S-FA |
| | T-MBD10-48S-FA |

φ80 mm

φ100 mm

φ120 mm

DC Centrifugal Blower MBD Series Impeller Diameter φ120 mm



With Alarm

Operating Ambient Temperature: -10~+60°C
Operating Voltage Range: ±10%
Materials
Motor Case: Die cast aluminum
Casing: Die cast aluminum
Impeller: Aluminum
Overheat Protection: Built-in overheat protection circuit
Bearings: Ball bearings

Specifications RoHS

| Product Name | Voltage VDC | Current A | Speed r/min | Maximum Air Flow m ³ /min | Maximum Static Pressure Pa | Noise Level dB (A) |
|--|------------------|-----------|-------------|--------------------------------------|----------------------------|--------------------|
| Standard Type | MBD12-24 | 24 | 1900 | 3.0 | 372 | 58 |
| Low-speed Alarm, Contact Alarm Type <Alarm Specifications: ⑦> | MBD12-24A | 24 | 1900 | 3.0 | 372 | 58 |

● Alarm specifications ⑦ → Page F-17

Product Line

● Centrifugal Blowers

| Product Name |
|------------------|
| MBD12-24 |
| MBD12-24A |

The following items are included in each product.
Centrifugal Blower, Operating Manual

● Fan Kit Products

◇ With Finger Guard

| Product Name |
|-----------------------|
| T-MBD12-24-GA |
| T-MBD12-24A-GA |

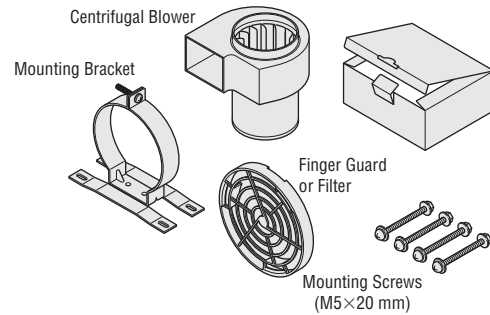
● With Finger Guard, Mounting Bracket, Mounting Screws

◇ With Filter

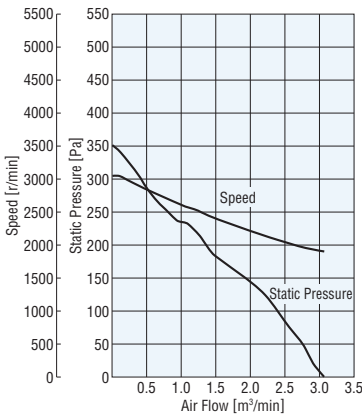
| Product Name |
|-----------------------|
| T-MBD12-24-FA |
| T-MBD12-24A-FA |

● With Filter, Mounting Bracket, Mounting Screws

The following items are included in each kit.

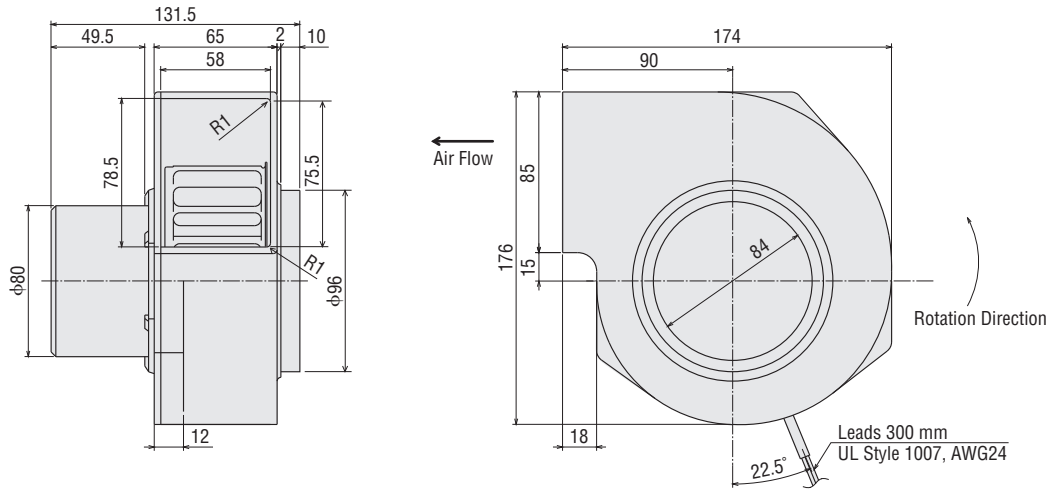


Air Flow – Static Pressure Characteristics

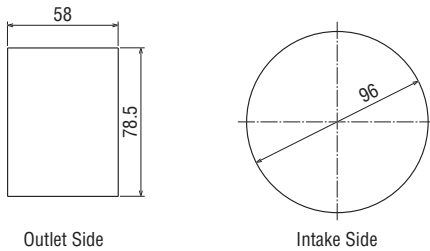


Dimensions (Unit = mm)

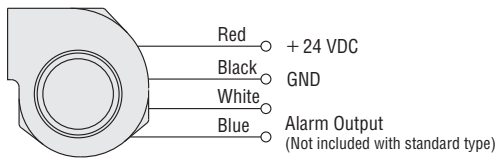
Mass: 1.5 kg



Panel Cut-Out (Unit = mm)



Connection Diagram



Accessories

| Product | Product Name | Page |
|------------------|--------------|-------|
| Finger Guard | FGB12 | F-120 |
| Filter | FLB12 | F-122 |
| Mounting Bracket | PAS4B | F-128 |
| Duct Joint | FD12 | F-129 |

- Introduction
- AC Input MU
- AC Input MRS
- DC Input MDS-MD
- DC Input Low-Speed Alarm MDA
- DC Input Long-Life MDE
- AC Input High-Efficiency MBS
- AC Input MB
- DC Input MBD
- AC Input MF
- DC Input MFD
- Accessories
- Installation

