

## 7 mm Safety Magnetic Sensors



### Safety Magnetic Target - SMP1 series

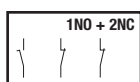
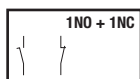
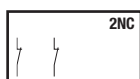


Actuation distance 5 mm

SMP1AMG

### Safety Magnetic Sensors

#### Contacts



SMP1A...



SMP1A...K



SMP1A...001M



SMP1A...L



SMP1A...KL



SMP1A...001ML

### Safety Magnetic Target - SMP2 series



Actuation distance 5 mm

SMP2AMG

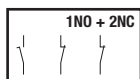
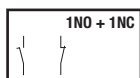
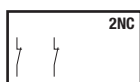


Actuation distance 8 mm

SMP2BMG

### Safety Magnetic Sensors

#### Contacts



SMP2A...



SMP2A...K



SMP2A...001M



SMP2A...L



SMP2A...KL



SMP2A...001ML

## Safety Magnetic Sensors - Description

### Applications

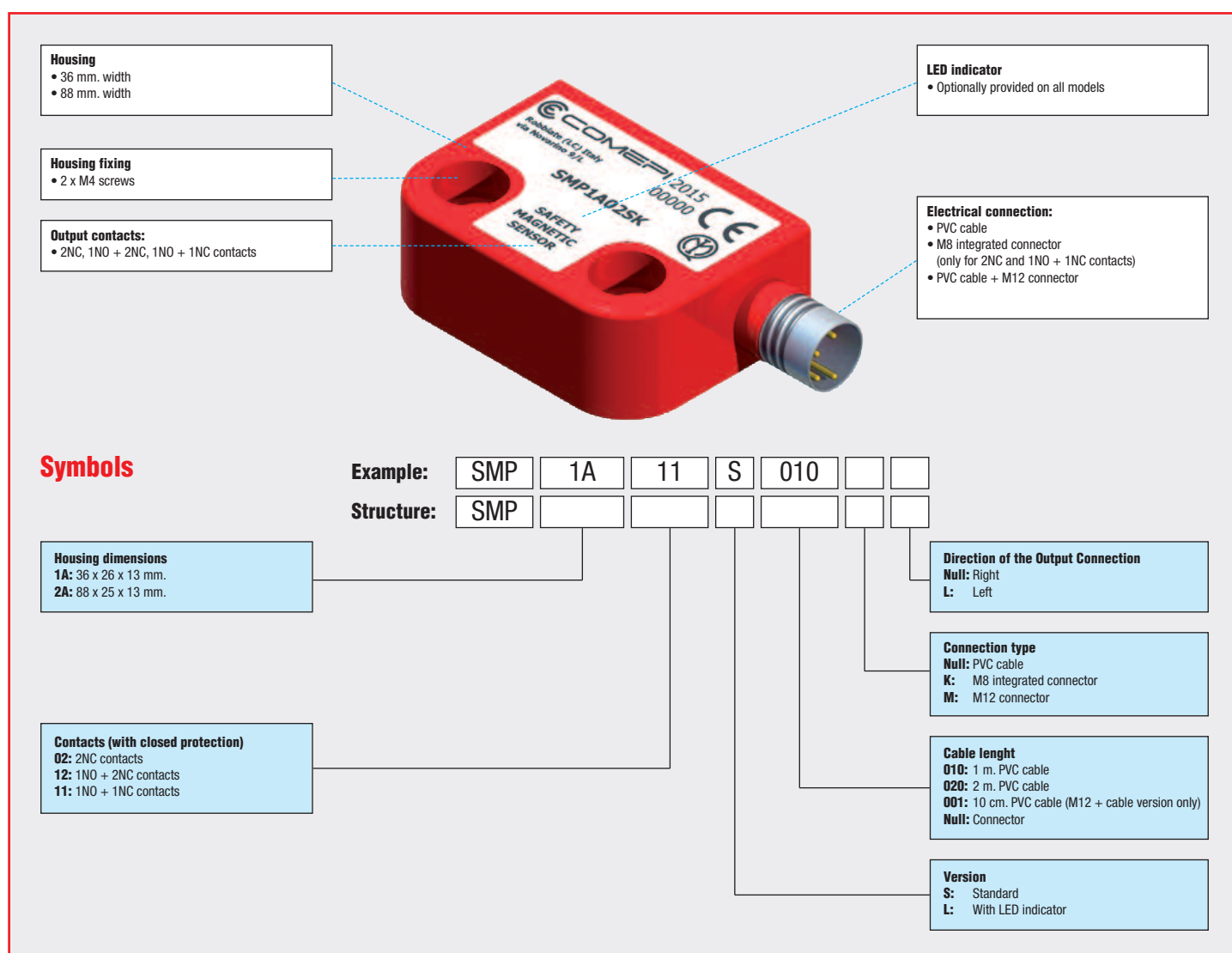
Comepi offers a range of safety magnetic sensors SMP series designed to satisfy applications requiring high safety standards. Combined with an appropriate safety module, SMP magnetic sensors guarantee a safety system with Safety Integrity Level (SIL CL) up to SIL 3 (according to EN 62061) and Performance Level up to PLe (according to EN ISO 13849-1).

- Sealed: immune to dirt
- Wide actuation zone
- Difficult to by-pass as they can be easily hidden (with non-magnetic material)
- Electrical output contacts: 2NC, 1NO + 1NC or 1NO + 2NC
- Optionally provided with LED indicator
- Intervention from all directions

They comply with the requirements of European Directives (Low Voltage, Machines and Electromagnetic Compatibility) and are conform to European and international standards.

### Description

The housing is made of technopolymer and it offers a degree of protection IP67. Integrated cable or M8 / M12 connection allow to install these devices in the most varied applications.



## Safety Magnetic Sensors - Technical Data

SMP Series	
<b>Temperature range</b>	
– Operation	– 25 ... + 80 °C
– Storage	– 25 ... + 80 °C
<b>Mounting positions</b>	All positions are authorised
<b>Degree of protection</b> (according to IEC 60529 and EN 60 529)	IP 67
<b>Pollution degree</b> (according to IEC 60947-5-1)	3
<b>Sil level</b> (Sil CL) (according to EN IEC 62061)	Up to Sil 3 (*)
<b>Performance level</b> (PL) (according to EN ISO 13849-1)	Up to PLe (*)
<b>Safety category</b> (according to EN ISO 13849-1)	Up to Cat 4 (*)
<b>B10d for each channel</b>	20.000.000 (*) / 400.000 (used with max load: 24V - 0,25A)

(\*) Connecting a single sensor to a COMEPI safety module MS1A31...\*.

### Electrical Data

<b>Rated insulation voltage <math>U_i</math></b> according to IEC 60947-1 and EN 60947-1		120 Vac (cable connection and cable +M12 4 poles connector) 60 Vac / 75 Vdc (M8 connector) 30 Vac / 36 Vdc (M12 8 poles connector)
<b>Rated impulse withstand voltage <math>U_{imp}</math></b>	kV	6 (1,5 for M8 or M12 connectors)
<b>Conventional free air thermal current <math>I_{th}</math></b> (according to IEC 60947-5-1) $\theta < 40$ °C	A	0,25
<b>Rated voltage / current</b>		24 Vac / dc - 0,25 A (resistive load)
<b>Max resistive load</b>	W	6 (external fuse 0,25 A type F)
<b>Electrical durability</b>		1.000.000 operations

### Approvals

<b>Standards</b>	EN 60947-1, EN 60947-5-1, EN 60947-5-2, EN 60947-5-3 (*), EN ISO 14119, EN ISO 12100-1, EN ISO 12100-2, EN ISO 13849-1, EN ISO 13849-2, EN 60204-1, EN 60529
<b>Directives</b>	2006/95/CE low voltage 2006/42/CE machinery 2004/108/CE electromagnetic
<b>Certifications</b>	CE - IMQ

## Safety Magnetic Sensors - Technical Data

### Implementation

#### SMP1AMG

##### Switching distance

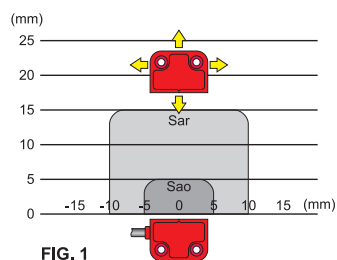


FIG. 1

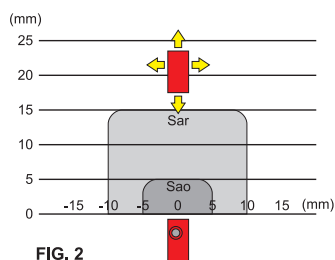
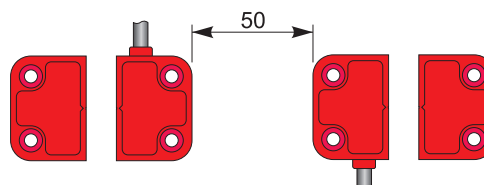


FIG. 2

N.B.: Le aree di attivazione mostrate in fig. 1 e fig. 2 sono indicative.

##### Minimum distance between sensors



#### SMP2AMG

##### Switching distance

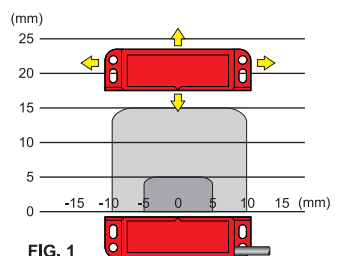


FIG. 1

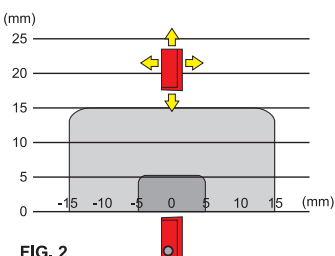
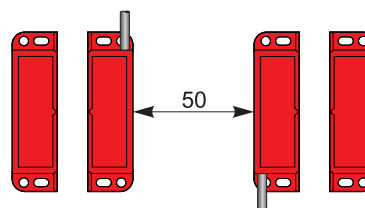


FIG. 2

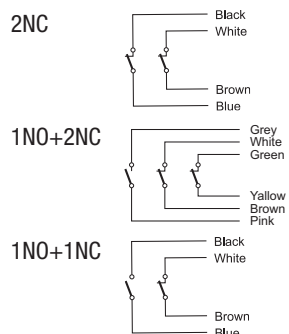
N.B. : The activation areas shown in Fig.1 and Fig. 2 are indicative.

##### Minimum distance between sensors

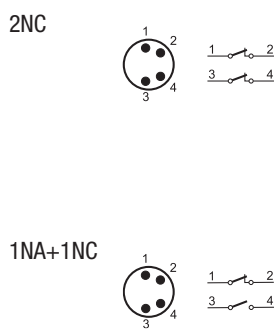


### Electrical connections

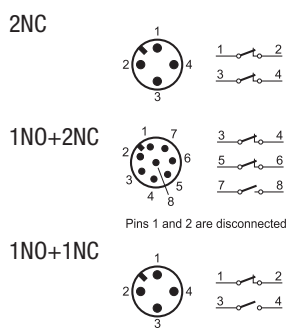
#### Cable connections



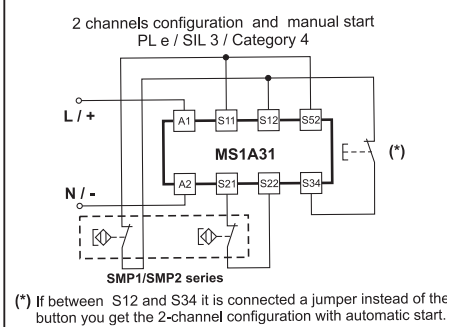
#### M8 connections



#### Cable + M12 connections



#### Example of connection with safety module



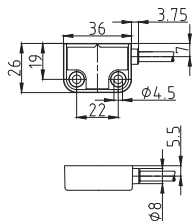
SMP1 - Polymeric housing - IP67

Safety Magnetic Target  
SMP1AMG

Actuation distance: 5 mm.

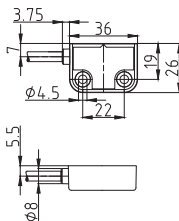


Cable connection



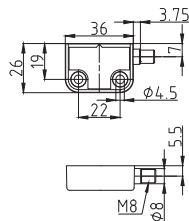
Weight 75 g  
Operating diagram Page 45

Cable connection



Weight 75 g  
Operating diagram Page 45

M8 integrated connector



Weight 35 g  
Operating diagram Page 45

Contact Blocks

2NC	SMP1A02S●●●	SMP1A02S●●●L	SMP1A02SK
1NO + 2NC	SMP1A12S●●●	SMP1A12S●●●L	
1NO + 1NC	SMP1A11S●●●	SMP1A11S●●●L	SMP1A11SK
2NC with LED signalling	SMP1A02L●●●	SMP1A02L●●●L	SMP1A02LK
1NO + 2NC with LED signalling	SMP1A12L●●●	SMP1A12L●●●L	
1NO + 1NC with LED signalling	SMP1A11L●●●	SMP1A11L●●●L	SMP1A11LK

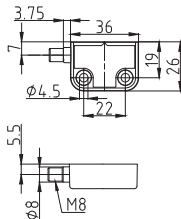
Electrical connection: Replace the symbol "●●●" with the lenght of the cable desired  
010: Cable lenght 1m  
020: Cable lenght 2m

Safety Magnetic Target  
SMP1AMG

Actuation distance: 5 mm.

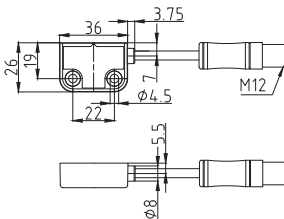


M8 integrated connector



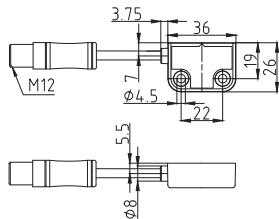
Weight 35 g  
Operating diagram Page 45

M12 connector



Weight 50 g  
Operating diagram Page 45

M12 connector



Weight 50 g  
Operating diagram Page 45

Contact Blocks

2NC	SMP1A02SKL	SMP1A02S001M	SMP1A02S001ML
1NO + 2NC		SMP1A12S001M	SMP1A12S001ML
1NO + 1NC	SMP1A11SKL	SMP1A11S001M	SMP1A11S001ML
2NC with LED signalling	SMP1A02LKL	SMP1A02L001M	SMP1A02L001ML
1NO + 2NC with LED signalling		SMP1A12L001M	SMP1A12L001ML
1NO + 1NC with LED signalling	SMP1A11LKL	SMP1A11L001M	SMP1A11L001ML

