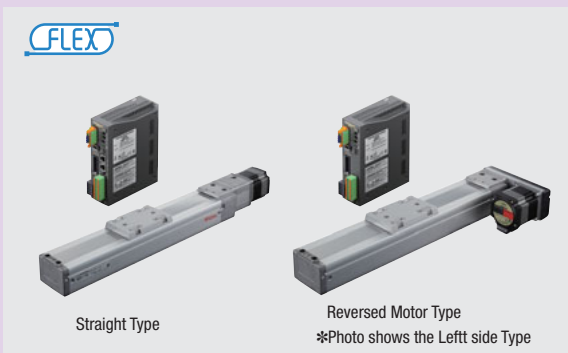


Electric Linear Slides EVS Series α STEP AZ/AR Equipped

<Additional Information>
 ● Technical reference → Page H-1
 ● Regulations & Standards → Page I-2



The **EVS** series contains compact linear slides that are highly rigid and have a simple dust-resistant structure. Motors from the α STEP **AZ** series or **AR** series are equipped.

Electric linear slides actualize the unique advantages of stepper motors, such as high response, low vibration, and no hunting.

Straight type and reversed motor type variations are available to match your installation space.

- High rigidity and compact guide
- Space saving by using reversed motors
- Simple dust-resistant structure prevent dust and other foreign objects from entering
- For Cleanroom Use

FLEX What is FLEX?

FLEX is the collective name for products that support I/O control, Modbus (RTU) control, and FA network control via network converters.

These products enable simple connection and simple control, shortening the total lead time for system construction.

Overview, Product Series

Electric Linear Slides

α STEP AZ/AR EAS

α STEP AZ/AR EVS

Electric Cylinders

α STEP AZ/AR EAC

Compact Linear Actuators

α STEP AZ DRS2

DRLII

Installation

Hollow Rotary Actuators

α STEP AZ/AR DGII

Accessories

Features

Wide Variety of Products to Match Installation Spaces and Environments

Slim, high accuracy, and high rigidity slides and the product line includes reversed motor types with shorter overall length. Standard motor of **AZ** Series or **AR** Series are equipped. Various products are available.

Motor Type

α STEP AZ Series

- Battery-free, Absolute Sensor Equipped
- Positioning Information is Available without a sensor
- High Reliability with Closed Loop Control
- High Efficiency Technology Reduces Motor Heat Generation and Saves Energy



Built-in Controller Type

Pulse Input Type

α STEP AR Series

- High Reliability with Closed Loop Control
- High Efficiency Technology Reduces Motor Heat Generation and Saves Energy



Built-in Controller Type

Pulse Input Type

Linear Slides



Straight Type



Reversed Motor Type



For Cleanroom Use

● This photo shows **EVS6** (Width 74 mm × Height 66.5 mm).

High Rigidity · High Accuracy

Even with the compact motor, a high permissible moment is possible due to the rigidity of the guide.

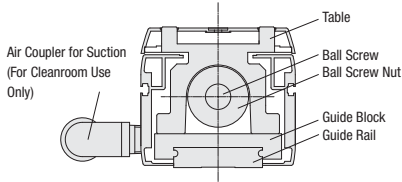
● High Rigidity, High Accuracy Guide

The guides used on linear slides are LM Guide*¹ made by THK. The slim, stainless guide increases the load moment. And the highly accurate guide enables traveling parallelism*² of 0.03 mm or less.

*1 This is a Registered trademark of THK.
*2 For a traveling parallelism, see page H-61.

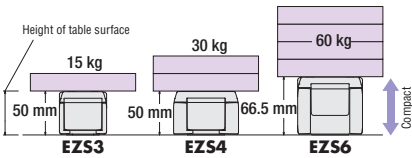
α STEP
AZ
Equipped

α STEP
AR
Equipped



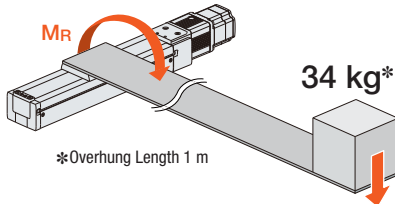
Traveling Parallelism of 0.03 mm or Less

Slim Body with High Transportable Mass



● High Permissible Moment

A high load moment is achieved from a compact body.



*The load value was calculated using the static permissible moment 340 N·m for **EZS6**.

● Permissible Moment in Rolling Directions [N·m]

Frame Size	Static Permissible Moment* ¹	Dynamic Permissible Moment* ²
EZS3	52.0	10.5
EZS4	176	27.8
EZS6	340	55.6

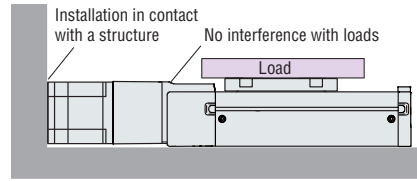
*1 Load moment that the linear guide can support while the motor is stopped.

*2 Load moment that the linear guide can support while the motor is in operation.

Space Saving

Effective utilization of the installation space is possible because the body does not interfere with the loads.

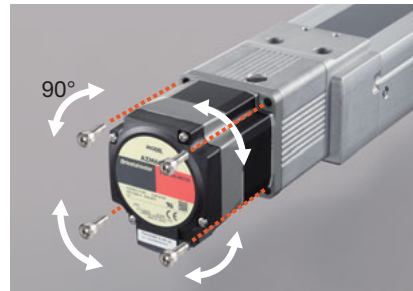
Installation in contact with another structure is possible.



● Cable Outlet Can be Rotated

The motor can be rotated and installed in 4 possible directions*, so the direction of the cable outlet can be changed to match the installation location.

* Reversed motor type can be rotated in 3 possible directions.

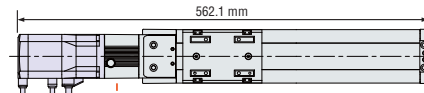


● Reversed Motor Type

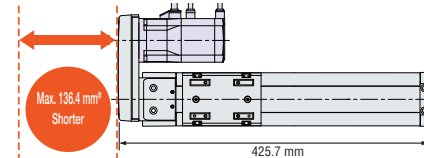
The length of the reversed motor type is up to 136.4 mm shorter than the straight type. This contributes to space saving with equipment.

AZ Series
EZS6 With Electromagnetic Brake Stroke 200 mm

● Straight Type



● Reversed Motor Type



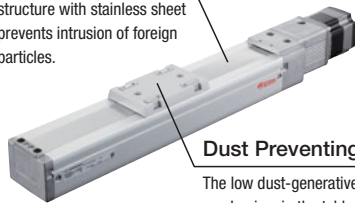
*When electromagnetic brake is installed

Simple Dust-Resistant Structure

The simple dust-resistant structure made from a stainless sheet and the roller mechanism in the table part prevent dust and other foreign particles from entering.

Keeps Out Foreign Objects

Simple dust-resistant structure with stainless sheet prevents intrusion of foreign particles.

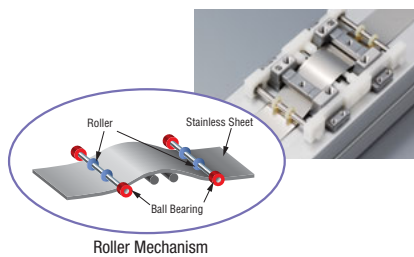


Dust Preventing Structure

The low dust-generative roller mechanism in the table part helps to prevent the generation of dust via friction with the stainless sheet.

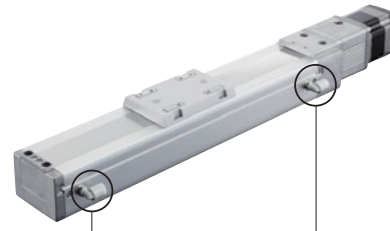
● Low Dust-Generative Roller Mechanism (Patented)

The low dust-generative roller mechanism in the table part rotates smoothly against the stainless sheet to prevent the generation of dust via friction. In addition to dust prevention, it increases the durability of the stainless sheet.



For Cleanroom Use

With the low dust-generative roller mechanism and clean grease, a clean degree of ISO Standard Class 3* (equivalent to FED Standard Class 1) has been achieved.



Air Coupler for Suction
Clean degree of Class 3 is achieved by using a suction pump.

* ISO Standard Class 3
[ISO Standard Class 3]

Particle Diameter [μm]	0.1	0.3	0.5
Dust-Generation Amount [pieces/m ³]	1000 or less	102 or less	35 or less

● Low Dust-Generative Clean Grease

Low dust-generative clean grease is used on the ball screw, guides, bearing etc.



Roller bearings in the table



Ball screw and guides

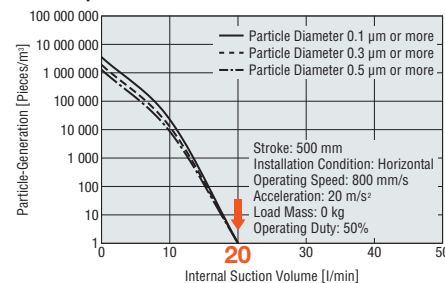
Uses low dust-generative clean grease

● For details about grease, refer to page H-35.

● Clean Degree of Class 3 is Achieved with Minimum Suction

For example, **EZS3** can achieve the clean degree of ISO Standard Class 3, when the internal suction volume is approximately 20 l/min or more.

● Correlation Diagram of Particle-Generation and Suction Volume Example **EZS3CL-D050 EZS3CR-D050**



By minimizing amount of suction by the pump, power consumption can also be reduced.

● ISO Standard Internal suction volume that meets the clean degree of Class 3.

Type	EZS3	EZS4	EZS6
Internal Suction Volume [l/min]	20	30	30

● For the correlation diagram of dust-generation and suction amount for **EZS4** and **EZS6**, refer to page H-62.

Overview, Product Series

Electric Linear Slides

Q^{STEP} AZ/AR EAS

Q^{STEP} AZ/AR EZS

Electric Cylinders

Q^{STEP} AZ/AR EAC

Compact Linear Actuators

Q^{STEP} AZ DRS2

DRLII

Installation

Hollow Rotary Actuators

Q^{STEP} AZ/AR DGII

Accessories

High Speed Driving with Light Load or Heavy Load

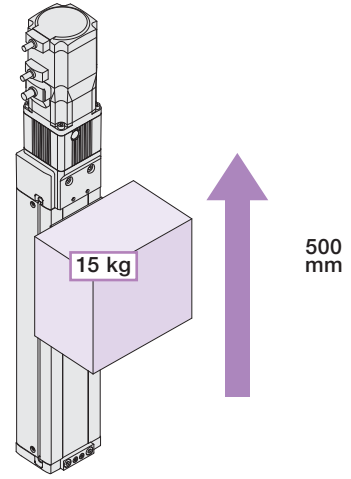
Only at Oriental Motor!

The positioning time, operating speed and acceleration can all be easily determined. The product can be selected while estimating the movement from the same graph, even under changing operating conditions such as no load or inching.

Let our technical team help find the right actuator based on your profile demands.

Example Product:
Product Name: **EZS6**
Lead Screw Pitch: 6 mm
Power Supply Input: 230 VAC

Example Operation:
Load Mass: 15 kg
Positioning Distance: 500 mm
Drive Direction: Vertical



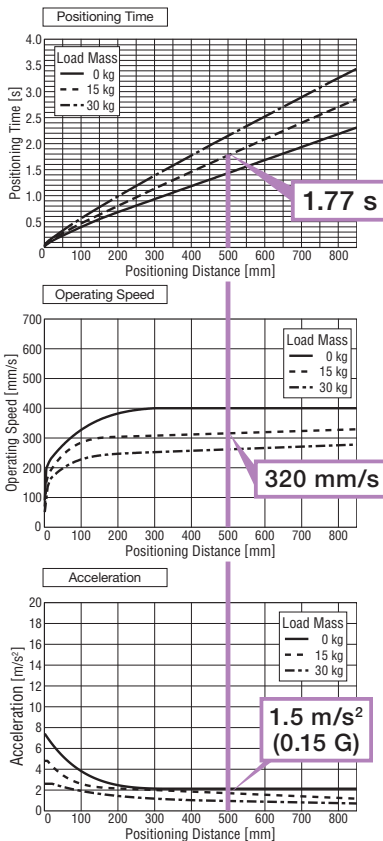
α STEP
AZ
Equipped

α STEP
AR
Equipped

High-Speed with a Heavy Load

High-speed is possible when transporting a heavy load in a vertical direction.

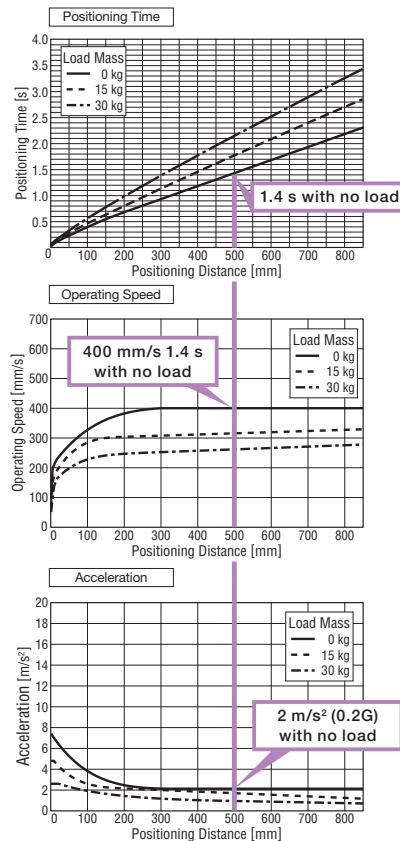
Load Mass: 15 kg
Positioning Distance: 500 mm
Positioning Time: 1.77 s
Operating Speed: 320 mm/s
Acceleration: 1.5 m/s² (0.15 G)



High-Speed with a Light Load

Operation is possible at an even higher speed when the load is absent, for example on the return.

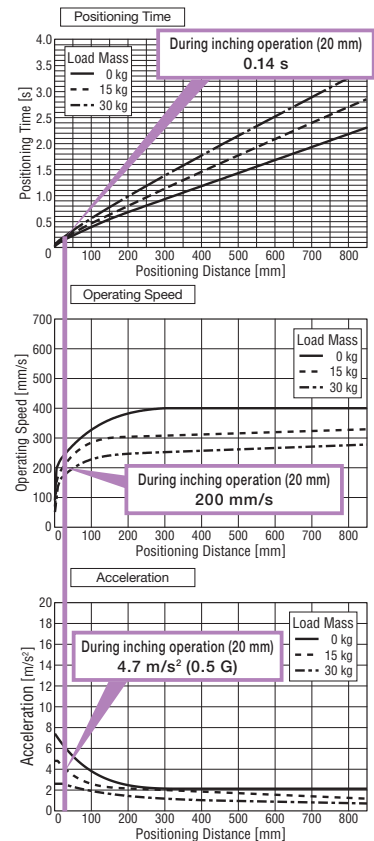
Load Mass: 0 kg
Positioning Distance: 500 mm
Positioning Time: 1.4 s
Operating Speed: 400 mm/s
Acceleration: 2 m/s² (0.2 G)



High-Speed during Inching Operation

Operation is possible at high speed during inching operation over short distances.

Load Mass: 15 kg
Positioning Distance: 20 mm
Positioning Time: 0.14 s
Operating Speed: 200 mm/s
Acceleration: 4.7 m/s² (0.5 G)



2 Driver Types Available to Match the System Configuration

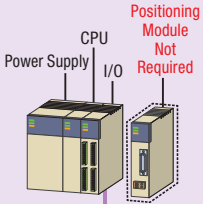
Built-in Controller Type **C-FLEX**

With this type, the operating data is set in the driver, and is then selected and executed from the host system. Host system connection and control are performed with any of the following: I/O, Modbus (RTU), RS-485, or FA network. By using a network converter (sold separately), CC-link, MECHATROLINK or EtherCAT communication are possible.

C-FLEX


FLEX is the collective name for products that support I/O control, Modbus (RTU) control, and FA network control via network converters. These products enable simple connection and simple control, shortening the total lead time for system construction.

● When Controlling with I/O



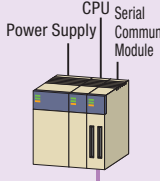
I/O

● When Controlling from Computer or Touch Screen



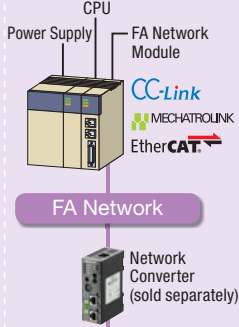
Modbus (RTU)

● When Controlling with Serial Communication




Modbus (RTU)

● When Controlling with FA Network



RS-485

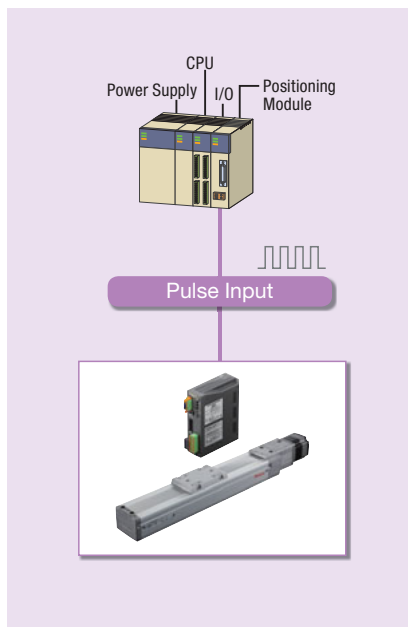


Because the driver has the information necessary for motor operation, the burden on the host PLC is reduced. The system configuration when using multi-axis control has been simplified. Setting can be done by data setting software or RS-485 communication.

- **CC-Link** is a registered trademark of CC-Link Partner Association and **MECHATROLINK** is a registered trademark of MECHATROLINK Members Association.
- **EtherCAT** is registered trademark licensed by Beckhoff Automation GmbH, Germany.

Pulse Input Type

This type executes operations by inputting pulses into the driver. It controls the motor using a positioning module (pulse generator).



Overview, Product Series

Electric Linear Slides

QSTEP AZ/AR EAS

QSTEP AZ/AR EZS

Electric Cylinders

QSTEP AZ/AR EAC

Compact Linear Actuators

QSTEP AZ DRS2

DRLII

Installation

Hollow Rotary Actuators

QSTEP AZ/AR DGII

Accessories

Set and Operate Easily from a PC

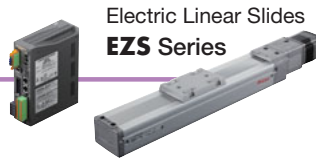
By using the data setting software **MEXE02**, data setting, saving, actual operation, and confirmation via each monitor function can be performed easily on a computer.

α STEP
AZ
Equipped

Data Setting Software MEXE02

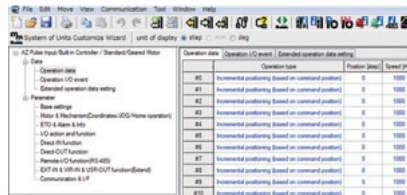
The data setting software **MEXE02** can be downloaded from the website.

α STEP
AR
Equipped



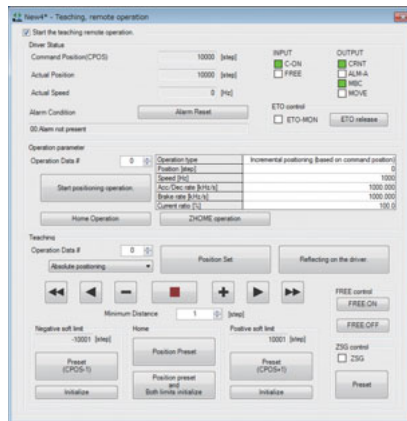
Operating Data/Parameter Settings

You can easily set and save the operating data and parameters on a computer. And then by forwarding the saved data when you replace the driver, etc. the settings will be the same.



Teaching and Remote Operation

Data setting software can be used to drive the motor. This can be used for teaching or test drive purposes.



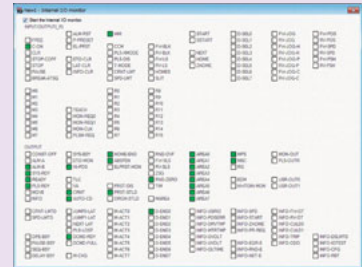
Multi-Monitoring Compatible

Multi-monitoring enables remote operation or teaching while monitoring.

Various Monitoring Functions

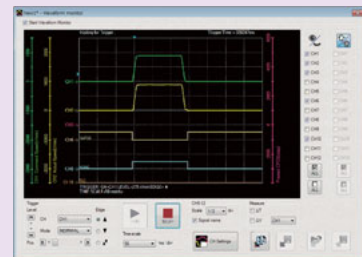
I/O Monitoring

The status of the I/O wired to the driver can be checked on a computer. This can be used for post-wiring I/O checks or I/O checks during operation.



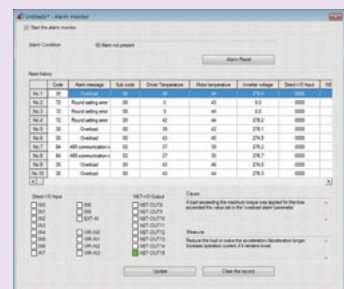
Waveform Monitoring

The operating status of the motor (such as command speed and motor load factor) can be checked from an oscilloscope-like image. This can be used for equipment start-up and adjustment.



Alarm Monitoring

When an abnormality occurs, the details of the abnormality and the solution can be checked.

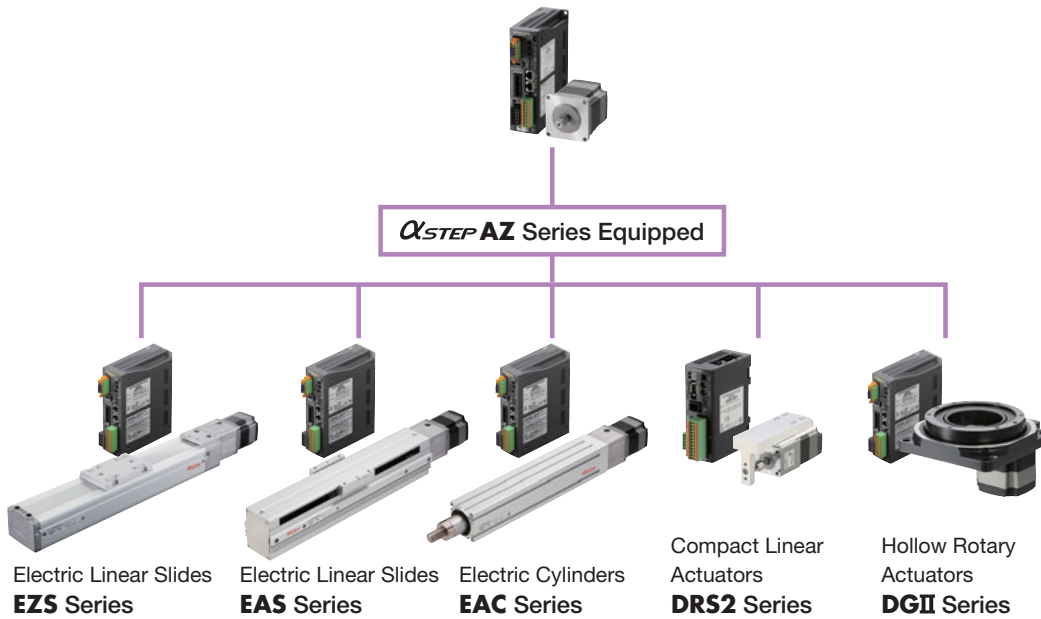


Standardized Wiring, Control, and Maintenance Parts

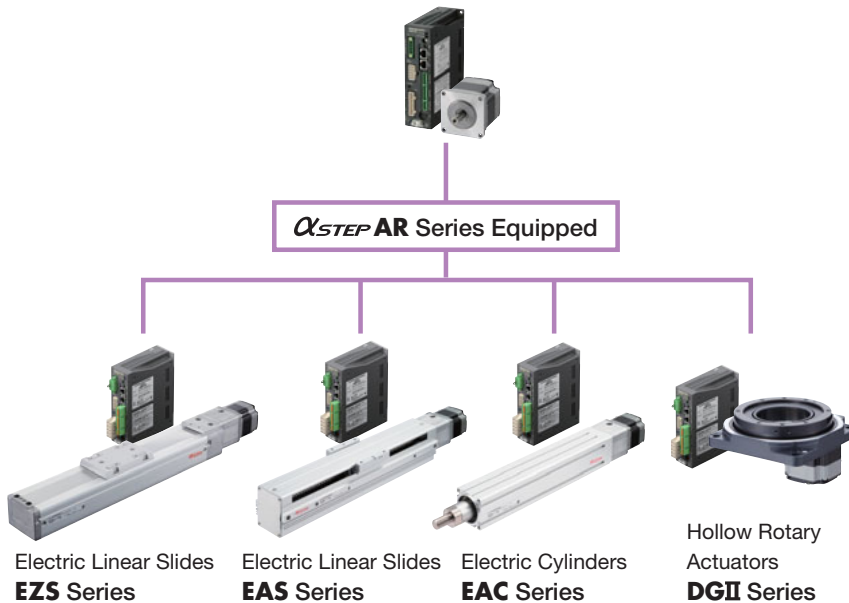
Various mechanical components equipped with α STEP AZ Series and α STEP AR Series are available.

Wiring, control, and maintenance parts have been standardized, since the same motors and drivers are equipped, which reduces the startup time and simplifies operation.

Battery-Free, Absolute Sensor Equipped
 α STEP AZ Series



α STEP AR Series



Merits of Standardization

● **Wiring Standardization**

Labor used for electrical design and wiring can be saved, since the I/O pin assignment is the same.

● **Control Standardization**

These products can be operated via the same method, since the control method is the same. For the network control, the remote I/O and the command code are also the same. The labor of making the program can be eliminated.

● **Maintenance Parts Standardization**

Maintenance parts can be minimized, since the motor, driver, and cable are common to all. Management costs (parts cost, management space) can be reduced.



Overview, Product Series

Electric Linear Slides

α STEP AZ/AR EAS

α STEP AZ/AR EZS

Electric Cylinders

α STEP AZ/AR EAC

Compact Linear Actuators

α STEP AZ DRS2

DRLII

Installation

Hollow Rotary Actuators

α STEP AZ/AR DGII

Accessories

Electric Linear Slides

EZS Series α STEP AR Equipped

For details on this product please refer to our website.
www.orientalmotor.eu

α STEP
AZ
Equipped

Product Line

α STEP
AR
Equipped

● AC Input

◇ Product Number (Straight Type/Reversed Motor Type)

① Series Name	② Motor Orientation	④ Lead Screw Pitch	⑤ Stroke	⑥ Motor	⑦ Motor Type	⑧ Power Supply Input*	⑨ Driver Type	⑩ Connection Cable
EZS3	L	D	005	AR	A	C	D	1
EZS3 EZS4 EZS6	L: Reversed Motor Type (Left Side) R: Reversed Motor Type (Right Side) Blank: Straight Type	D: 12 mm E: 6 mm	005: 50 mm 010: 100 mm 015: 150 mm 085: 850 mm (50 mm increments)	AR Series	A: Single Shaft M: With Electromagnetic Brake	Built-in Controller Type C: Single-Phase 200~240 VAC Pulse Input Type C: Single-Phase 200~230 VAC	D: Built-in Controller Type Blank: Pulse Input Type	Number: Included Connection Cable Length 1: 1 m 2: 2 m 3: 3 m Blank: Connection cable is not included

* For the single-phase 100-115 (120) VAC models and three-phase 200-230 VAC models (pulse input type only), please contact the nearest Oriental Motor sales office.

◇ EZS3 Straight Type/Reversed Motor Type

The prices are the same even if the ② motor orientation (L, R, Blank) or ④ lead screw pitch (D, E) are different.

⑨ Driver Type (D, Blank)	Built-in Controller Type (D)				Pulse Input Type (Blank)				
	Single Shaft (A)		With Electromagnetic Brake (M)		Single Shaft (A)		With Electromagnetic Brake (M)		
⑦ Motor Type (A, M)	Single Shaft (A)		With Electromagnetic Brake (M)		Single Shaft (A)		With Electromagnetic Brake (M)		
⑩ Connection Cable (1, 2, 3, Blank)	Included (1, 2, 3)	Not Included	Included (1, 2, 3)	Not Included	Included (1, 2, 3)	Not Included	Included (1, 2, 3)	Not Included	
⑤ Stroke	50 mm (005)	€975.00	€945.00	€1,133.00	€1,103.00	€925.00	€895.00	€1,083.00	€1,053.00
	100 mm (010)	€975.00	€945.00	€1,133.00	€1,103.00	€925.00	€895.00	€1,083.00	€1,053.00
	150 mm (015)	€998.00	€968.00	€1,156.00	€1,126.00	€948.00	€918.00	€1,106.00	€1,076.00
	200 mm (020)	€998.00	€968.00	€1,156.00	€1,126.00	€948.00	€918.00	€1,106.00	€1,076.00
	250 mm (025)	€1,020.00	€990.00	€1,179.00	€1,149.00	€970.00	€940.00	€1,129.00	€1,099.00
	300 mm (030)	€1,020.00	€990.00	€1,179.00	€1,149.00	€970.00	€940.00	€1,129.00	€1,099.00
	350 mm (035)	€1,043.00	€1,013.00	€1,201.00	€1,171.00	€993.00	€963.00	€1,151.00	€1,121.00
	400 mm (040)	€1,043.00	€1,013.00	€1,201.00	€1,171.00	€993.00	€963.00	€1,151.00	€1,121.00
	450 mm (045)	€1,066.00	€1,036.00	€1,224.00	€1,194.00	€1,016.00	€986.00	€1,174.00	€1,144.00
	500 mm (050)	€1,066.00	€1,036.00	€1,224.00	€1,194.00	€1,016.00	€986.00	€1,174.00	€1,144.00
	550 mm (055)	€1,088.00	€1,058.00	€1,246.00	€1,216.00	€1,038.00	€1,008.00	€1,196.00	€1,166.00
	600 mm (060)	€1,088.00	€1,058.00	€1,246.00	€1,216.00	€1,038.00	€1,008.00	€1,196.00	€1,166.00
	650 mm (065)	€1,111.00	€1,081.00	€1,269.00	€1,239.00	€1,061.00	€1,031.00	€1,219.00	€1,189.00
	700 mm (070)	€1,111.00	€1,081.00	€1,269.00	€1,239.00	€1,061.00	€1,031.00	€1,219.00	€1,189.00

◇ EZS4 Straight Type/Reversed Motor Type

The prices are the same even if the ② motor orientation (L, R, Blank) or ④ lead screw pitch (D, E) are different.

⑨ Driver Type (D, Blank)	Built-in Controller Type (D)				Pulse Input Type (Blank)				
	Single Shaft (A)		With Electromagnetic Brake (M)		Single Shaft (A)		With Electromagnetic Brake (M)		
⑦ Motor Type (A, M)	Single Shaft (A)		With Electromagnetic Brake (M)		Single Shaft (A)		With Electromagnetic Brake (M)		
⑩ Connection Cable (1, 2, 3, Blank)	Included (1, 2, 3)	Not Included	Included (1, 2, 3)	Not Included	Included (1, 2, 3)	Not Included	Included (1, 2, 3)	Not Included	
⑤ Stroke	50 mm (005)	€1,009.00	€979.00	€1,167.00	€1,137.00	€959.00	€929.00	€1,117.00	€1,087.00
	100 mm (010)	€1,009.00	€979.00	€1,167.00	€1,137.00	€959.00	€929.00	€1,117.00	€1,087.00
	150 mm (015)	€1,032.00	€1,002.00	€1,190.00	€1,160.00	€982.00	€952.00	€1,140.00	€1,110.00
	200 mm (020)	€1,032.00	€1,002.00	€1,190.00	€1,160.00	€982.00	€952.00	€1,140.00	€1,110.00
	250 mm (025)	€1,054.00	€1,024.00	€1,213.00	€1,183.00	€1,004.00	€974.00	€1,163.00	€1,133.00
	300 mm (030)	€1,054.00	€1,024.00	€1,213.00	€1,183.00	€1,004.00	€974.00	€1,163.00	€1,133.00
	350 mm (035)	€1,077.00	€1,047.00	€1,235.00	€1,205.00	€1,027.00	€997.00	€1,185.00	€1,155.00
	400 mm (040)	€1,077.00	€1,047.00	€1,235.00	€1,205.00	€1,027.00	€997.00	€1,185.00	€1,155.00
	450 mm (045)	€1,099.00	€1,069.00	€1,258.00	€1,228.00	€1,049.00	€1,019.00	€1,208.00	€1,178.00
	500 mm (050)	€1,099.00	€1,069.00	€1,258.00	€1,228.00	€1,049.00	€1,019.00	€1,208.00	€1,178.00
	550 mm (055)	€1,122.00	€1,092.00	€1,280.00	€1,250.00	€1,072.00	€1,042.00	€1,230.00	€1,200.00
	600 mm (060)	€1,122.00	€1,092.00	€1,280.00	€1,250.00	€1,072.00	€1,042.00	€1,230.00	€1,200.00
	650 mm (065)	€1,145.00	€1,115.00	€1,303.00	€1,273.00	€1,095.00	€1,065.00	€1,253.00	€1,223.00
	700 mm (070)	€1,145.00	€1,115.00	€1,303.00	€1,273.00	€1,095.00	€1,065.00	€1,253.00	€1,223.00

◇ EZS6 Straight Type/Reversed Motor Type

The prices are the same even if the ② motor orientation (L, R, Blank) or ④ lead screw pitch (D, E) are different.

⑨ Driver Type (D, Blank)	Built-in Controller Type (D)				Pulse Input Type (Blank)				
	Single Shaft (A)		With Electromagnetic Brake (M)		Single Shaft (A)		With Electromagnetic Brake (M)		
⑦ Motor Type (A, M)	Single Shaft (A)		With Electromagnetic Brake (M)		Single Shaft (A)		With Electromagnetic Brake (M)		
⑩ Connection Cable (1, 2, 3, Blank)	Included (1, 2, 3)	Not Included	Included (1, 2, 3)	Not Included	Included (1, 2, 3)	Not Included	Included (1, 2, 3)	Not Included	
⑤ Stroke	50 mm (005)	€1,239.00	€1,209.00	€1,442.00	€1,412.00	€1,189.00	€1,159.00	€1,392.00	€1,362.00
	100 mm (010)	€1,239.00	€1,209.00	€1,442.00	€1,412.00	€1,189.00	€1,159.00	€1,392.00	€1,362.00
	150 mm (015)	€1,261.00	€1,231.00	€1,465.00	€1,435.00	€1,211.00	€1,181.00	€1,415.00	€1,385.00
	200 mm (020)	€1,261.00	€1,231.00	€1,465.00	€1,435.00	€1,211.00	€1,181.00	€1,415.00	€1,385.00
	250 mm (025)	€1,284.00	€1,254.00	€1,487.00	€1,457.00	€1,234.00	€1,204.00	€1,437.00	€1,407.00
	300 mm (030)	€1,284.00	€1,254.00	€1,487.00	€1,457.00	€1,234.00	€1,204.00	€1,437.00	€1,407.00
	350 mm (035)	€1,306.00	€1,276.00	€1,510.00	€1,480.00	€1,256.00	€1,226.00	€1,460.00	€1,430.00
	400 mm (040)	€1,306.00	€1,276.00	€1,510.00	€1,480.00	€1,256.00	€1,226.00	€1,460.00	€1,430.00
	450 mm (045)	€1,329.00	€1,299.00	€1,532.00	€1,502.00	€1,279.00	€1,249.00	€1,482.00	€1,452.00
	500 mm (050)	€1,329.00	€1,299.00	€1,532.00	€1,502.00	€1,279.00	€1,249.00	€1,482.00	€1,452.00
	550 mm (055)	€1,352.00	€1,322.00	€1,555.00	€1,525.00	€1,302.00	€1,272.00	€1,505.00	€1,475.00
	600 mm (060)	€1,352.00	€1,322.00	€1,555.00	€1,525.00	€1,302.00	€1,272.00	€1,505.00	€1,475.00
	650 mm (065)	€1,374.00	€1,344.00	€1,578.00	€1,548.00	€1,324.00	€1,294.00	€1,528.00	€1,498.00
	700 mm (070)	€1,374.00	€1,344.00	€1,578.00	€1,548.00	€1,324.00	€1,294.00	€1,528.00	€1,498.00
	750 mm (075)	€1,397.00	€1,367.00	€1,600.00	€1,570.00	€1,347.00	€1,317.00	€1,550.00	€1,520.00
	800 mm (080)	€1,397.00	€1,367.00	€1,600.00	€1,570.00	€1,347.00	€1,317.00	€1,550.00	€1,520.00
850 mm (085)	€1,419.00	€1,389.00	€1,623.00	€1,593.00	€1,369.00	€1,339.00	€1,573.00	€1,543.00	

◆ Product Number (For Cleanroom Use)

① Series Name	③ Direction of Air Coupler for Suction*1	④ Lead Screw Pitch	⑤ Stroke	⑥ Motor	⑦ Motor Type	⑧ Power Supply Input*2	⑨ Driver Type	⑩ Connection Cable
EZS3	CL	D	005	AR	A	C	D	1
EZS3 EZS4 EZS6	CL: Left Direction CR: Right Direction	D: 12 mm E: 6 mm	005: 50 mm 010: 100 mm 015: 150 mm 085: 850 mm (50 mm increments)	AR Series	A: Single Shaft M: With Electromagnetic Brake	Built-in Controller Type C: Single-Phase 200~240 VAC Pulse Input Type C: Single-Phase 200~230 VAC	D: Built-in Controller Type Blank: Pulse Input Type	Number: Included Connection Cable Length 1: 1 m 2: 2 m 3: 3 m Blank: Connection cable is not included

*1 Only straight type is compatible for Cleanroom Use. For Cleanroom Use products, the direction of air coupler for suction is required.

*2 For the single-phase 100-115 (120) VAC models and three-phase 200-230 VAC models (pulse input type only), please contact the nearest Oriental Motor sales office.

◆ EZS3 For Cleanroom Use

The prices are the same even if the ③ direction of air coupler for suction (**CL, CR**) or ④ lead screw pitch (**D, E**) are different.

⑨ Driver Type (D , Blank)	Built-in Controller Type (D)				Pulse Input Type (Blank)				
	Single Shaft (A)		With Electromagnetic Brake (M)		Single Shaft (A)		With Electromagnetic Brake (M)		
⑦ Motor Type (A, M)	Single Shaft (A)		With Electromagnetic Brake (M)		Single Shaft (A)		With Electromagnetic Brake (M)		
⑩ Connection Cable (1, 2, 3 , Blank)	Included (1, 2, 3)	Not Included	Included (1, 2, 3)	Not Included	Included (1, 2, 3)	Not Included	Included (1, 2, 3)	Not Included	
⑤ Stroke	50 mm (005)	€1,088.00	€1,058.00	€1,246.00	€1,216.00	€1,038.00	€1,008.00	€1,196.00	€1,166.00
	100 mm (010)	€1,088.00	€1,058.00	€1,246.00	€1,216.00	€1,038.00	€1,008.00	€1,196.00	€1,166.00
	150 mm (015)	€1,111.00	€1,081.00	€1,269.00	€1,239.00	€1,061.00	€1,031.00	€1,219.00	€1,189.00
	200 mm (020)	€1,111.00	€1,081.00	€1,269.00	€1,239.00	€1,061.00	€1,031.00	€1,219.00	€1,189.00
	250 mm (025)	€1,133.00	€1,103.00	€1,292.00	€1,262.00	€1,083.00	€1,053.00	€1,242.00	€1,212.00
	300 mm (030)	€1,133.00	€1,103.00	€1,292.00	€1,262.00	€1,083.00	€1,053.00	€1,242.00	€1,212.00
	350 mm (035)	€1,156.00	€1,126.00	€1,314.00	€1,284.00	€1,106.00	€1,076.00	€1,264.00	€1,234.00
	400 mm (040)	€1,156.00	€1,126.00	€1,314.00	€1,284.00	€1,106.00	€1,076.00	€1,264.00	€1,234.00
	450 mm (045)	€1,179.00	€1,149.00	€1,337.00	€1,307.00	€1,129.00	€1,099.00	€1,287.00	€1,257.00
	500 mm (050)	€1,179.00	€1,149.00	€1,337.00	€1,307.00	€1,129.00	€1,099.00	€1,287.00	€1,257.00
	550 mm (055)	€1,201.00	€1,171.00	€1,359.00	€1,329.00	€1,151.00	€1,121.00	€1,309.00	€1,279.00
	600 mm (060)	€1,201.00	€1,171.00	€1,359.00	€1,329.00	€1,151.00	€1,121.00	€1,309.00	€1,279.00
	650 mm (065)	€1,224.00	€1,194.00	€1,382.00	€1,352.00	€1,174.00	€1,144.00	€1,332.00	€1,302.00
	700 mm (070)	€1,224.00	€1,194.00	€1,382.00	€1,352.00	€1,174.00	€1,144.00	€1,332.00	€1,302.00

◆ EZS4 For Cleanroom Use

The prices are the same even if the ③ direction of air coupler for suction (**CL, CR**) or ④ lead screw pitch (**D, E**) are different.

⑨ Driver Type (D , Blank)	Built-in Controller Type (D)				Pulse Input Type (Blank)				
	Single Shaft (A)		With Electromagnetic Brake (M)		Single Shaft (A)		With Electromagnetic Brake (M)		
⑦ Motor Type (A, M)	Single Shaft (A)		With Electromagnetic Brake (M)		Single Shaft (A)		With Electromagnetic Brake (M)		
⑩ Connection Cable (1, 2, 3 , Blank)	Included (1, 2, 3)	Not Included	Included (1, 2, 3)	Not Included	Included (1, 2, 3)	Not Included	Included (1, 2, 3)	Not Included	
⑤ Stroke	50 mm (005)	€1,122.00	€1,092.00	€1,280.00	€1,250.00	€1,072.00	€1,042.00	€1,230.00	€1,200.00
	100 mm (010)	€1,122.00	€1,092.00	€1,280.00	€1,250.00	€1,072.00	€1,042.00	€1,230.00	€1,200.00
	150 mm (015)	€1,145.00	€1,115.00	€1,303.00	€1,273.00	€1,095.00	€1,065.00	€1,253.00	€1,223.00
	200 mm (020)	€1,145.00	€1,115.00	€1,303.00	€1,273.00	€1,095.00	€1,065.00	€1,253.00	€1,223.00
	250 mm (025)	€1,167.00	€1,137.00	€1,326.00	€1,296.00	€1,117.00	€1,087.00	€1,276.00	€1,246.00
	300 mm (030)	€1,167.00	€1,137.00	€1,326.00	€1,296.00	€1,117.00	€1,087.00	€1,276.00	€1,246.00
	350 mm (035)	€1,190.00	€1,160.00	€1,348.00	€1,318.00	€1,140.00	€1,110.00	€1,298.00	€1,268.00
	400 mm (040)	€1,190.00	€1,160.00	€1,348.00	€1,318.00	€1,140.00	€1,110.00	€1,298.00	€1,268.00
	450 mm (045)	€1,213.00	€1,183.00	€1,371.00	€1,341.00	€1,163.00	€1,133.00	€1,321.00	€1,291.00
	500 mm (050)	€1,213.00	€1,183.00	€1,371.00	€1,341.00	€1,163.00	€1,133.00	€1,321.00	€1,291.00
	550 mm (055)	€1,235.00	€1,205.00	€1,393.00	€1,363.00	€1,185.00	€1,155.00	€1,343.00	€1,313.00
	600 mm (060)	€1,235.00	€1,205.00	€1,393.00	€1,363.00	€1,185.00	€1,155.00	€1,343.00	€1,313.00
	650 mm (065)	€1,258.00	€1,228.00	€1,416.00	€1,386.00	€1,208.00	€1,178.00	€1,366.00	€1,336.00
	700 mm (070)	€1,258.00	€1,228.00	€1,416.00	€1,386.00	€1,208.00	€1,178.00	€1,366.00	€1,336.00

◆ EZS6 For Cleanroom Use

The prices are the same even if the ③ direction of air coupler for suction (**CL, CR**) or ④ lead screw pitch (**D, E**) are different.

⑨ Driver Type (D , Blank)	Built-in Controller Type (D)				Pulse Input Type (Blank)				
	Single Shaft (A)		With Electromagnetic Brake (M)		Single Shaft (A)		With Electromagnetic Brake (M)		
⑦ Motor Type (A, M)	Single Shaft (A)		With Electromagnetic Brake (M)		Single Shaft (A)		With Electromagnetic Brake (M)		
⑩ Connection Cable (1, 2, 3 , Blank)	Included (1, 2, 3)	Not Included	Included (1, 2, 3)	Not Included	Included (1, 2, 3)	Not Included	Included (1, 2, 3)	Not Included	
⑤ Stroke	50 mm (005)	€1,352.00	€1,322.00	€1,555.00	€1,525.00	€1,302.00	€1,272.00	€1,505.00	€1,475.00
	100 mm (010)	€1,352.00	€1,322.00	€1,555.00	€1,525.00	€1,302.00	€1,272.00	€1,505.00	€1,475.00
	150 mm (015)	€1,374.00	€1,344.00	€1,578.00	€1,548.00	€1,324.00	€1,294.00	€1,528.00	€1,498.00
	200 mm (020)	€1,374.00	€1,344.00	€1,578.00	€1,548.00	€1,324.00	€1,294.00	€1,528.00	€1,498.00
	250 mm (025)	€1,397.00	€1,367.00	€1,600.00	€1,570.00	€1,347.00	€1,317.00	€1,550.00	€1,520.00
	300 mm (030)	€1,397.00	€1,367.00	€1,600.00	€1,570.00	€1,347.00	€1,317.00	€1,550.00	€1,520.00
	350 mm (035)	€1,419.00	€1,389.00	€1,623.00	€1,593.00	€1,369.00	€1,339.00	€1,573.00	€1,543.00
	400 mm (040)	€1,419.00	€1,389.00	€1,623.00	€1,593.00	€1,369.00	€1,339.00	€1,573.00	€1,543.00
	450 mm (045)	€1,442.00	€1,412.00	€1,645.00	€1,615.00	€1,392.00	€1,362.00	€1,595.00	€1,565.00
	500 mm (050)	€1,442.00	€1,412.00	€1,645.00	€1,615.00	€1,392.00	€1,362.00	€1,595.00	€1,565.00
	550 mm (055)	€1,465.00	€1,435.00	€1,668.00	€1,638.00	€1,415.00	€1,385.00	€1,618.00	€1,588.00
	600 mm (060)	€1,465.00	€1,435.00	€1,668.00	€1,638.00	€1,415.00	€1,385.00	€1,618.00	€1,588.00
	650 mm (065)	€1,487.00	€1,457.00	€1,691.00	€1,661.00	€1,437.00	€1,407.00	€1,641.00	€1,611.00
	700 mm (070)	€1,487.00	€1,457.00	€1,691.00	€1,661.00	€1,437.00	€1,407.00	€1,641.00	€1,611.00
	750 mm (075)	€1,510.00	€1,480.00	€1,713.00	€1,683.00	€1,460.00	€1,430.00	€1,663.00	€1,633.00
	800 mm (080)	€1,510.00	€1,480.00	€1,713.00	€1,683.00	€1,460.00	€1,430.00	€1,663.00	€1,633.00
850 mm (085)	€1,532.00	€1,502.00	€1,736.00	€1,706.00	€1,482.00	€1,452.00	€1,686.00	€1,656.00	

Overview, Product Series

Electric Linear Slides

Q1STEP
AZ/AR
EAS

Q1STEP
AZ/AR
EZS

Electric Cylinders

Q1STEP
AZ/AR
EAC

Compact Linear Actuators

Q1STEP
AZ
DRS2

DRLII

Installation

Hollow Rotary Actuators

Q1STEP
AZ/AR
DGII

Accessories

● DC Input

◇ Product Number (Straight Type/Reversed Motor Type)

① Series Name	② Motor Orientation	④ Lead Screw Pitch	⑤ Stroke	⑥ Motor	⑦ Motor Type	⑧ Power Supply Input	⑨ Driver Type	⑩ Connection Cable
EZS3	L	D	005	AR	A	K	D	1
EZS3 EZS4 EZS6	L: Reversed Motor Type (Left Side) R: Reversed Motor Type (Right Side) Blank: Straight Type	D: 12 mm E: 6 mm	005: 50 mm 010: 100 mm 015: 150 mm ~ 085: 850 mm (50 mm increments)	AR Series	A: Single Shaft M: With Electromagnetic Brake	K: 24/48 VDC	D: Built-in Controller Type Blank: Pulse Input Type	Number: Included Connection Cable Length 1: 1 m 2: 2 m 3: 3 m Blank: Connection cable is not included

α STEP AZ Equipped

α STEP AR Equipped

◇ EZS3 Straight Type/Reversed Motor Type

The prices are the same even if the ② motor orientation (L, R, Blank) or ④ lead screw pitch (D, E) are different.

⑨ Driver Type (D, Blank)	Built-in Controller Type (D)				Pulse Input Type (Blank)				
⑦ Motor Type (A, M)	Single Shaft (A)		With Electromagnetic Brake (M)		Single Shaft (A)		With Electromagnetic Brake (M)		
⑩ Connection Cable (1, 2, 3, Blank)	Included (1, 2, 3)	Not Included	Included (1, 2, 3)	Not Included	Included (1, 2, 3)	Not Included	Included (1, 2, 3)	Not Included	
⑤ Stroke	50 mm (005)	€798.00	€768.00	€956.00	€926.00	€748.00	€718.00	€906.00	€876.00
	100 mm (010)	€798.00	€768.00	€956.00	€926.00	€748.00	€718.00	€906.00	€876.00
	150 mm (015)	€820.00	€790.00	€978.00	€948.00	€770.00	€740.00	€928.00	€898.00
	200 mm (020)	€820.00	€790.00	€978.00	€948.00	€770.00	€740.00	€928.00	€898.00
	250 mm (025)	€843.00	€813.00	€1,001.00	€971.00	€793.00	€763.00	€951.00	€921.00
	300 mm (030)	€843.00	€813.00	€1,001.00	€971.00	€793.00	€763.00	€951.00	€921.00
	350 mm (035)	€865.00	€835.00	€1,024.00	€994.00	€815.00	€785.00	€974.00	€944.00
	400 mm (040)	€865.00	€835.00	€1,024.00	€994.00	€815.00	€785.00	€974.00	€944.00
	450 mm (045)	€888.00	€858.00	€1,046.00	€1,016.00	€838.00	€808.00	€996.00	€966.00
	500 mm (050)	€888.00	€858.00	€1,046.00	€1,016.00	€838.00	€808.00	€996.00	€966.00
	550 mm (055)	€911.00	€881.00	€1,069.00	€1,039.00	€861.00	€831.00	€1,019.00	€989.00
	600 mm (060)	€911.00	€881.00	€1,069.00	€1,039.00	€861.00	€831.00	€1,019.00	€989.00
	650 mm (065)	€933.00	€903.00	€1,091.00	€1,061.00	€883.00	€853.00	€1,041.00	€1,011.00
	700 mm (070)	€933.00	€903.00	€1,091.00	€1,061.00	€883.00	€853.00	€1,041.00	€1,011.00

◇ EZS4 Straight Type/Reversed Motor Type

The prices are the same even if the ② motor orientation (L, R, Blank) or ④ lead screw pitch (D, E) are different.

⑨ Driver Type (D, Blank)	Built-in Controller Type (D)				Pulse Input Type (Blank)				
⑦ Motor Type (A, M)	Single Shaft (A)		With Electromagnetic Brake (M)		Single Shaft (A)		With Electromagnetic Brake (M)		
⑩ Connection Cable (1, 2, 3, Blank)	Included (1, 2, 3)	Not Included	Included (1, 2, 3)	Not Included	Included (1, 2, 3)	Not Included	Included (1, 2, 3)	Not Included	
⑤ Stroke	50 mm (005)	€831.00	€801.00	€990.00	€960.00	€781.00	€751.00	€940.00	€910.00
	100 mm (010)	€831.00	€801.00	€990.00	€960.00	€781.00	€751.00	€940.00	€910.00
	150 mm (015)	€854.00	€824.00	€1,012.00	€982.00	€804.00	€774.00	€962.00	€932.00
	200 mm (020)	€854.00	€824.00	€1,012.00	€982.00	€804.00	€774.00	€962.00	€932.00
	250 mm (025)	€877.00	€847.00	€1,035.00	€1,005.00	€827.00	€797.00	€985.00	€955.00
	300 mm (030)	€877.00	€847.00	€1,035.00	€1,005.00	€827.00	€797.00	€985.00	€955.00
	350 mm (035)	€899.00	€869.00	€1,058.00	€1,028.00	€849.00	€819.00	€1,008.00	€978.00
	400 mm (040)	€899.00	€869.00	€1,058.00	€1,028.00	€849.00	€819.00	€1,008.00	€978.00
	450 mm (045)	€922.00	€892.00	€1,080.00	€1,050.00	€872.00	€842.00	€1,030.00	€1,000.00
	500 mm (050)	€922.00	€892.00	€1,080.00	€1,050.00	€872.00	€842.00	€1,030.00	€1,000.00
	550 mm (055)	€944.00	€914.00	€1,103.00	€1,073.00	€894.00	€864.00	€1,053.00	€1,023.00
	600 mm (060)	€944.00	€914.00	€1,103.00	€1,073.00	€894.00	€864.00	€1,053.00	€1,023.00
	650 mm (065)	€967.00	€937.00	€1,125.00	€1,095.00	€917.00	€887.00	€1,075.00	€1,045.00
	700 mm (070)	€967.00	€937.00	€1,125.00	€1,095.00	€917.00	€887.00	€1,075.00	€1,045.00

◇ EZS6 Straight Type/Reversed Motor Type

The prices are the same even if the ② motor orientation (L, R, Blank) or ④ lead screw pitch (D, E) are different.

⑨ Driver Type (D, Blank)	Built-in Controller Type (D)				Pulse Input Type (Blank)				
⑦ Motor Type (A, M)	Single Shaft (A)		With Electromagnetic Brake (M)		Single Shaft (A)		With Electromagnetic Brake (M)		
⑩ Connection Cable (1, 2, 3, Blank)	Included (1, 2, 3)	Not Included	Included (1, 2, 3)	Not Included	Included (1, 2, 3)	Not Included	Included (1, 2, 3)	Not Included	
⑤ Stroke	50 mm (005)	€1,061.00	€1,031.00	€1,264.00	€1,234.00	€1,011.00	€981.00	€1,214.00	€1,184.00
	100 mm (010)	€1,061.00	€1,031.00	€1,264.00	€1,234.00	€1,011.00	€981.00	€1,214.00	€1,184.00
	150 mm (015)	€1,084.00	€1,054.00	€1,287.00	€1,257.00	€1,034.00	€1,004.00	€1,237.00	€1,207.00
	200 mm (020)	€1,084.00	€1,054.00	€1,287.00	€1,257.00	€1,034.00	€1,004.00	€1,237.00	€1,207.00
	250 mm (025)	€1,106.00	€1,076.00	€1,310.00	€1,280.00	€1,056.00	€1,026.00	€1,260.00	€1,230.00
	300 mm (030)	€1,106.00	€1,076.00	€1,310.00	€1,280.00	€1,056.00	€1,026.00	€1,260.00	€1,230.00
	350 mm (035)	€1,129.00	€1,099.00	€1,332.00	€1,302.00	€1,079.00	€1,049.00	€1,282.00	€1,252.00
	400 mm (040)	€1,129.00	€1,099.00	€1,332.00	€1,302.00	€1,079.00	€1,049.00	€1,282.00	€1,252.00
	450 mm (045)	€1,151.00	€1,121.00	€1,355.00	€1,325.00	€1,101.00	€1,071.00	€1,305.00	€1,275.00
	500 mm (050)	€1,151.00	€1,121.00	€1,355.00	€1,325.00	€1,101.00	€1,071.00	€1,305.00	€1,275.00
	550 mm (055)	€1,174.00	€1,144.00	€1,377.00	€1,347.00	€1,124.00	€1,094.00	€1,327.00	€1,297.00
	600 mm (060)	€1,174.00	€1,144.00	€1,377.00	€1,347.00	€1,124.00	€1,094.00	€1,327.00	€1,297.00
	650 mm (065)	€1,197.00	€1,167.00	€1,400.00	€1,370.00	€1,147.00	€1,117.00	€1,350.00	€1,320.00
	700 mm (070)	€1,197.00	€1,167.00	€1,400.00	€1,370.00	€1,147.00	€1,117.00	€1,350.00	€1,320.00
	750 mm (075)	€1,219.00	€1,189.00	€1,423.00	€1,393.00	€1,169.00	€1,139.00	€1,373.00	€1,343.00
	800 mm (080)	€1,219.00	€1,189.00	€1,423.00	€1,393.00	€1,169.00	€1,139.00	€1,373.00	€1,343.00
	850 mm (085)	€1,242.00	€1,212.00	€1,445.00	€1,415.00	€1,192.00	€1,162.00	€1,395.00	€1,365.00

◆ Product Number (For Cleanroom Use)

① Series Name	③ Direction of Air Coupler for Suction*	④ Lead Screw Pitch	⑤ Stroke	⑥ Motor	⑦ Motor Type	⑧ Power Supply Input	⑨ Driver Type	⑩ Connection Cable
EZS3	CL	D	005	AR	A	K	D	1
EZS3 EZS4 EZS6	CL: Left Direction CR: Right Direction	D: 12 mm E: 6 mm	005: 50 mm 010: 100 mm 015: 150 mm 085: 850 mm (50 mm increments)	AR Series	A: Single Shaft M: With Electromagnetic Brake	K: 24/48 VDC	D: Built-in Controller Type Blank: Pulse Input Type	Number: Included Connection Cable Length 1: 1 m 2: 2 m 3: 3 m Blank: Connection cable is not included

*Only straight type is compatible for Cleanroom Use. For Cleanroom Use products, the direction of air coupler for suction is required.

◆ EZS3 For Cleanroom Use

The prices are the same even if the ③ direction of air coupler for suction (**CL, CR**) or ④ lead screw pitch (**D, E**) are different.

⑨ Driver Type (D , Blank)	Built-in Controller Type (D)				Pulse Input Type (Blank)				
	Single Shaft (A)		With Electromagnetic Brake (M)		Single Shaft (A)		With Electromagnetic Brake (M)		
⑦ Motor Type (A, M)	Single Shaft (A)		With Electromagnetic Brake (M)		Single Shaft (A)		With Electromagnetic Brake (M)		
⑩ Connection Cable (1, 2, 3 , Blank)	Included (1, 2, 3)	Not Included	Included (1, 2, 3)	Not Included	Included (1, 2, 3)	Not Included	Included (1, 2, 3)	Not Included	
⑤ Stroke	50 mm (005)	€911.00	€881.00	€1,069.00	€1,039.00	€861.00	€831.00	€1,019.00	€989.00
	100 mm (010)	€911.00	€881.00	€1,069.00	€1,039.00	€861.00	€831.00	€1,019.00	€989.00
	150 mm (015)	€933.00	€903.00	€1,091.00	€1,061.00	€883.00	€853.00	€1,041.00	€1,011.00
	200 mm (020)	€933.00	€903.00	€1,091.00	€1,061.00	€883.00	€853.00	€1,041.00	€1,011.00
	250 mm (025)	€956.00	€926.00	€1,114.00	€1,084.00	€906.00	€876.00	€1,064.00	€1,034.00
	300 mm (030)	€956.00	€926.00	€1,114.00	€1,084.00	€906.00	€876.00	€1,064.00	€1,034.00
	350 mm (035)	€978.00	€948.00	€1,137.00	€1,107.00	€928.00	€898.00	€1,087.00	€1,057.00
	400 mm (040)	€978.00	€948.00	€1,137.00	€1,107.00	€928.00	€898.00	€1,087.00	€1,057.00
	450 mm (045)	€1,001.00	€971.00	€1,159.00	€1,129.00	€951.00	€921.00	€1,109.00	€1,079.00
	500 mm (050)	€1,001.00	€971.00	€1,159.00	€1,129.00	€951.00	€921.00	€1,109.00	€1,079.00
	550 mm (055)	€1,024.00	€994.00	€1,182.00	€1,152.00	€974.00	€944.00	€1,132.00	€1,102.00
	600 mm (060)	€1,024.00	€994.00	€1,182.00	€1,152.00	€974.00	€944.00	€1,132.00	€1,102.00
	650 mm (065)	€1,046.00	€1,016.00	€1,204.00	€1,174.00	€996.00	€966.00	€1,154.00	€1,124.00
	700 mm (070)	€1,046.00	€1,016.00	€1,204.00	€1,174.00	€996.00	€966.00	€1,154.00	€1,124.00

◆ EZS4 For Cleanroom Use

The prices are the same even if the ③ direction of air coupler for suction (**CL, CR**) or ④ lead screw pitch (**D, E**) are different.

⑨ Driver Type (D , Blank)	Built-in Controller Type (D)				Pulse Input Type (Blank)				
	Single Shaft (A)		With Electromagnetic Brake (M)		Single Shaft (A)		With Electromagnetic Brake (M)		
⑦ Motor Type (A, M)	Single Shaft (A)		With Electromagnetic Brake (M)		Single Shaft (A)		With Electromagnetic Brake (M)		
⑩ Connection Cable (1, 2, 3 , Blank)	Included (1, 2, 3)	Not Included	Included (1, 2, 3)	Not Included	Included (1, 2, 3)	Not Included	Included (1, 2, 3)	Not Included	
⑤ Stroke	50 mm (005)	€944.00	€914.00	€1,103.00	€1,073.00	€894.00	€864.00	€1,053.00	€1,023.00
	100 mm (010)	€944.00	€914.00	€1,103.00	€1,073.00	€894.00	€864.00	€1,053.00	€1,023.00
	150 mm (015)	€967.00	€937.00	€1,125.00	€1,095.00	€917.00	€887.00	€1,075.00	€1,045.00
	200 mm (020)	€967.00	€937.00	€1,125.00	€1,095.00	€917.00	€887.00	€1,075.00	€1,045.00
	250 mm (025)	€990.00	€960.00	€1,148.00	€1,118.00	€940.00	€910.00	€1,098.00	€1,068.00
	300 mm (030)	€990.00	€960.00	€1,148.00	€1,118.00	€940.00	€910.00	€1,098.00	€1,068.00
	350 mm (035)	€1,012.00	€982.00	€1,171.00	€1,141.00	€962.00	€932.00	€1,121.00	€1,091.00
	400 mm (040)	€1,012.00	€982.00	€1,171.00	€1,141.00	€962.00	€932.00	€1,121.00	€1,091.00
	450 mm (045)	€1,035.00	€1,005.00	€1,193.00	€1,163.00	€985.00	€955.00	€1,143.00	€1,113.00
	500 mm (050)	€1,035.00	€1,005.00	€1,193.00	€1,163.00	€985.00	€955.00	€1,143.00	€1,113.00
	550 mm (055)	€1,058.00	€1,028.00	€1,216.00	€1,186.00	€1,008.00	€978.00	€1,166.00	€1,136.00
	600 mm (060)	€1,058.00	€1,028.00	€1,216.00	€1,186.00	€1,008.00	€978.00	€1,166.00	€1,136.00
	650 mm (065)	€1,080.00	€1,050.00	€1,238.00	€1,208.00	€1,030.00	€1,000.00	€1,188.00	€1,158.00
	700 mm (070)	€1,080.00	€1,050.00	€1,238.00	€1,208.00	€1,030.00	€1,000.00	€1,188.00	€1,158.00

◆ EZS6 For Cleanroom Use

The prices are the same even if the ③ direction of air coupler for suction (**CL, CR**) or ④ lead screw pitch (**D, E**) are different.

⑨ Driver Type (D , Blank)	Built-in Controller Type (D)				Pulse Input Type (Blank)				
	Single Shaft (A)		With Electromagnetic Brake (M)		Single Shaft (A)		With Electromagnetic Brake (M)		
⑦ Motor Type (A, M)	Single Shaft (A)		With Electromagnetic Brake (M)		Single Shaft (A)		With Electromagnetic Brake (M)		
⑩ Connection Cable (1, 2, 3 , Blank)	Included (1, 2, 3)	Not Included	Included (1, 2, 3)	Not Included	Included (1, 2, 3)	Not Included	Included (1, 2, 3)	Not Included	
⑤ Stroke	50 mm (005)	€1,174.00	€1,144.00	€1,377.00	€1,347.00	€1,124.00	€1,094.00	€1,327.00	€1,297.00
	100 mm (010)	€1,174.00	€1,144.00	€1,377.00	€1,347.00	€1,124.00	€1,094.00	€1,327.00	€1,297.00
	150 mm (015)	€1,197.00	€1,167.00	€1,400.00	€1,370.00	€1,147.00	€1,117.00	€1,350.00	€1,320.00
	200 mm (020)	€1,197.00	€1,167.00	€1,400.00	€1,370.00	€1,147.00	€1,117.00	€1,350.00	€1,320.00
	250 mm (025)	€1,219.00	€1,189.00	€1,423.00	€1,393.00	€1,169.00	€1,139.00	€1,373.00	€1,343.00
	300 mm (030)	€1,219.00	€1,189.00	€1,423.00	€1,393.00	€1,169.00	€1,139.00	€1,373.00	€1,343.00
	350 mm (035)	€1,242.00	€1,212.00	€1,445.00	€1,415.00	€1,192.00	€1,162.00	€1,395.00	€1,365.00
	400 mm (040)	€1,242.00	€1,212.00	€1,445.00	€1,415.00	€1,192.00	€1,162.00	€1,395.00	€1,365.00
	450 mm (045)	€1,264.00	€1,234.00	€1,468.00	€1,438.00	€1,214.00	€1,184.00	€1,418.00	€1,388.00
	500 mm (050)	€1,264.00	€1,234.00	€1,468.00	€1,438.00	€1,214.00	€1,184.00	€1,418.00	€1,388.00
	550 mm (055)	€1,287.00	€1,257.00	€1,490.00	€1,460.00	€1,237.00	€1,207.00	€1,440.00	€1,410.00
	600 mm (060)	€1,287.00	€1,257.00	€1,490.00	€1,460.00	€1,237.00	€1,207.00	€1,440.00	€1,410.00
	650 mm (065)	€1,310.00	€1,280.00	€1,513.00	€1,483.00	€1,260.00	€1,230.00	€1,463.00	€1,433.00
	700 mm (070)	€1,310.00	€1,280.00	€1,513.00	€1,483.00	€1,260.00	€1,230.00	€1,463.00	€1,433.00
	750 mm (075)	€1,332.00	€1,302.00	€1,536.00	€1,506.00	€1,282.00	€1,252.00	€1,486.00	€1,456.00
	800 mm (080)	€1,332.00	€1,302.00	€1,536.00	€1,506.00	€1,282.00	€1,252.00	€1,486.00	€1,456.00
	850 mm (085)	€1,355.00	€1,325.00	€1,558.00	€1,528.00	€1,305.00	€1,275.00	€1,508.00	€1,478.00

Overview, Product Series

Electric Linear Slides

QSTEP AZ/AR EAS

QSTEP AZ/AR EZS

Electric Cylinders

QSTEP AZ/AR EAC

Compact Linear Actuators

QSTEP AZ DRS2

DRLII

Installation

Hollow Rotary Actuators

QSTEP AZ/AR DGII

Accessories

System Configuration

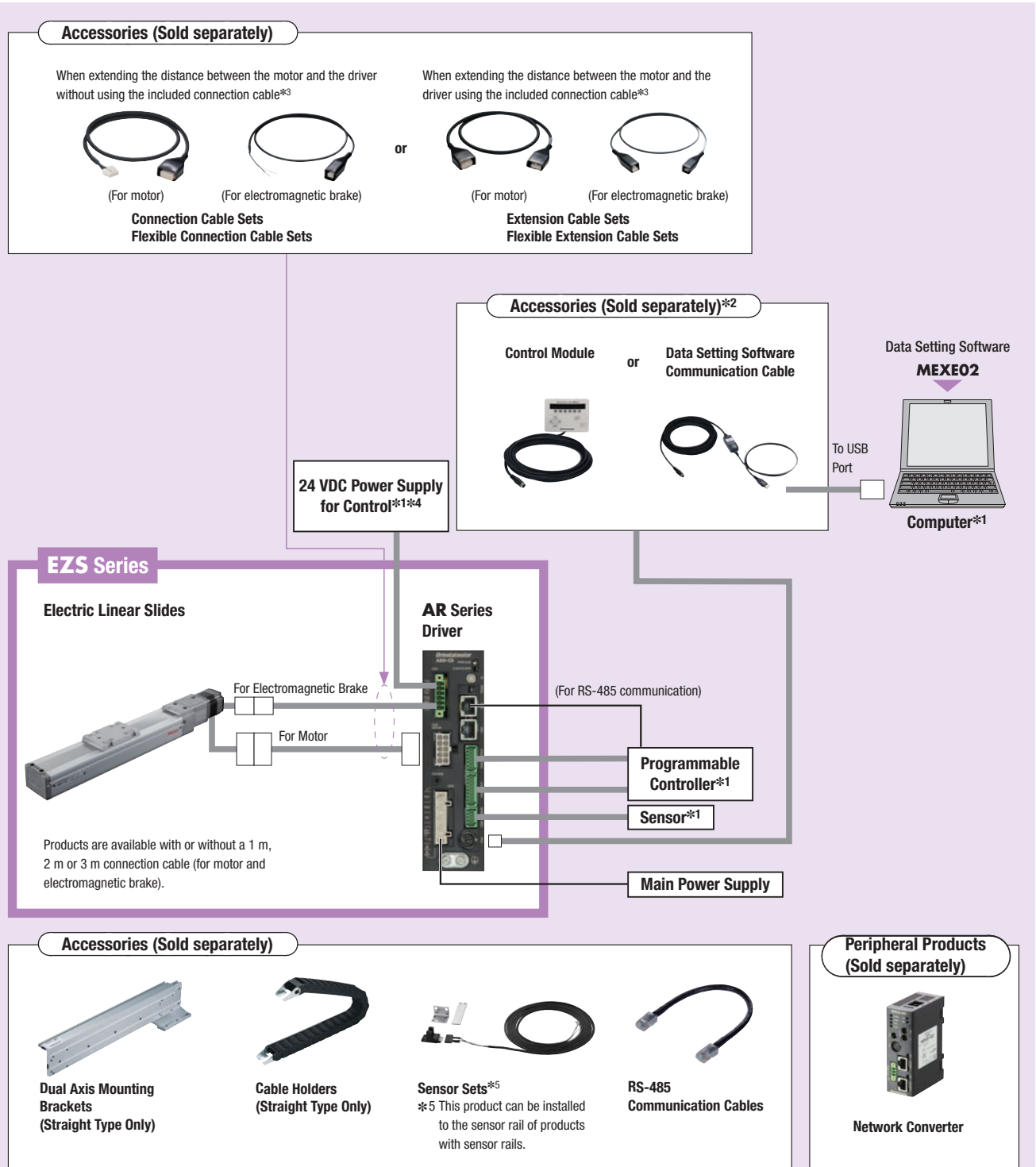
● When Equipped with **AR Series, Built-in Controller Type with Electromagnetic Brake**
(Information for AC input type and DC input type are both provided. The photos show the product with an AC input type.)

An example of a configuration using I/O control or RS-485 communication is shown below.

- *1 Not supplied
- *2 Required for push-motion operation via function extension.
- *3 Only products in which a connection cable is included.
- *4 Not required for products for DC input.

*α*STEP
AZ
Equipped

*α*STEP
AR
Equipped



● See the user manual for details regarding product operation. The user manual for the built-in controller type equipped to the **E-ZS Series** and **AR Series** is the same as that of the built-in controller type for the **AR Series** stepper motor and driver packages. The user manual is not supplied with the product. Please contact the nearest Oriental Motor sales office, or download it from the Oriental Motor website. www.orientalmotor.eu

● The system configuration shown above is an example. Other combinations are available.

● When Equipped with **AR Series, Pulse Input Type with Electromagnetic Brake**

(Information for AC input type and DC input type are both provided. The photos show the product with an AC input type.)

An example of a single-axis system configuration with the **SCX11** controller is shown below.

*1 Not supplied

*2 Only products in which a connection cable is included.

*3 For the products of DC input, the 24 VDC power supply is wired directly to the cable for electromagnetic brake.

Overview, Product Series

Electric Linear Slides

Q^{STEP} AZ/AR EAS

Q^{STEP} AZ/AR EZS

Electric Cylinders

Q^{STEP} AZ/AR EAC

Compact Linear Actuators

Q^{STEP} AZ/AR DRS2

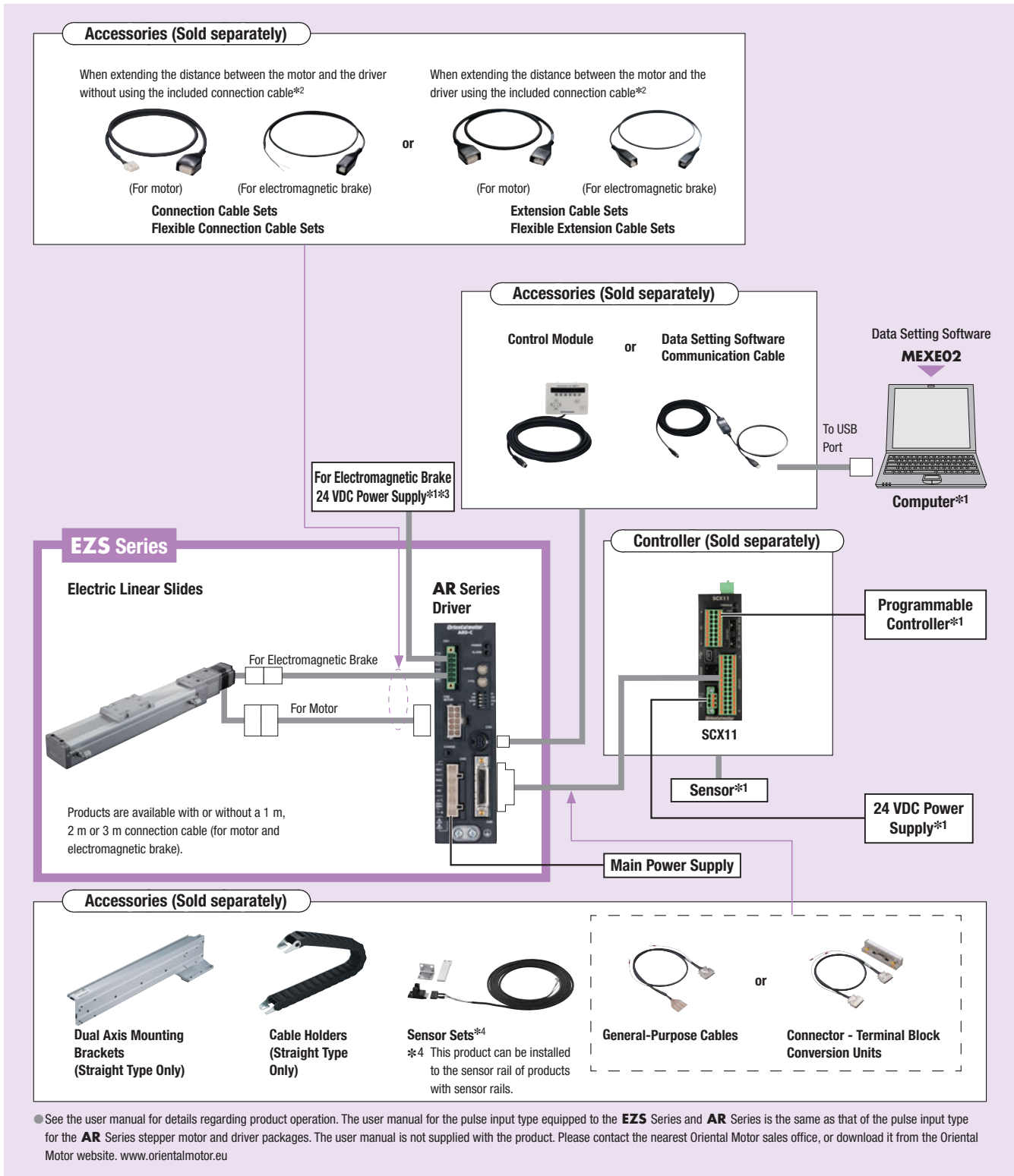
DRLII

Installation

Hollow Rotary Actuators

Q^{STEP} AZ/AR DGII

Accessories



● The system configuration shown above is an example. Other combinations are available.

➔ For details (specifications, characteristics, dimensions and others) on these products please refer to our website or contact your nearest Oriental Motor sales office.

www.orientalmotor.eu